

Dan Imhoff

Food Systems and
The Weight of the Nation

There is no connection between food and health. People are fed by a food industry which pays no attention to health and healed by a health industry that pays no attention to food.

—Wendell Berry

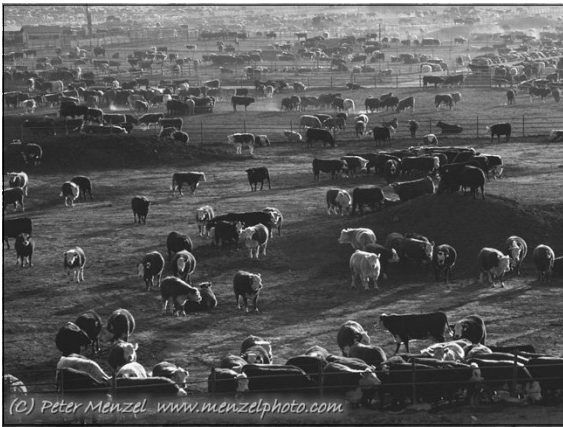
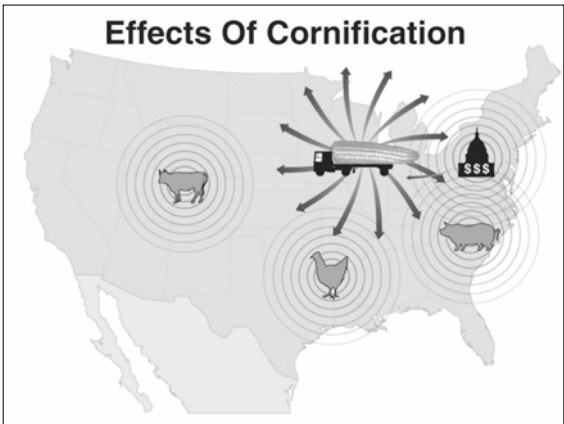
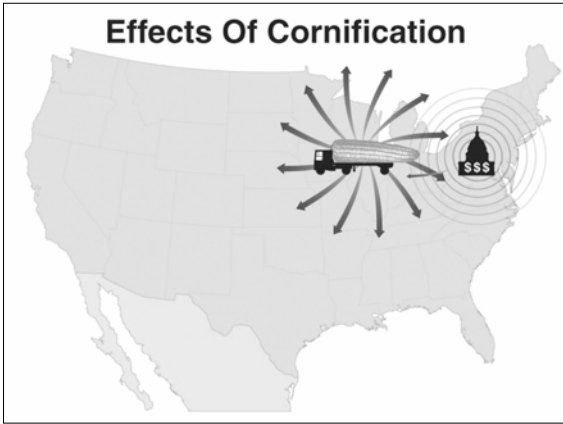
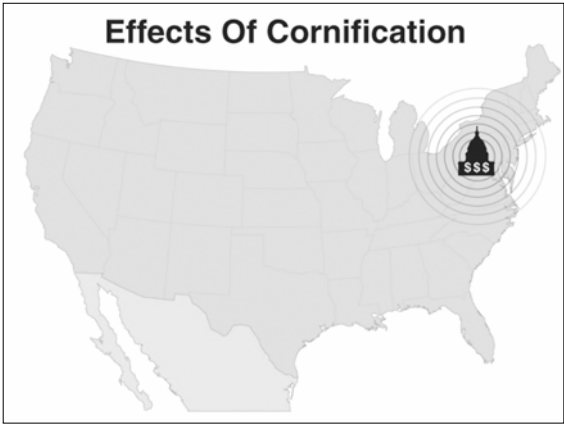


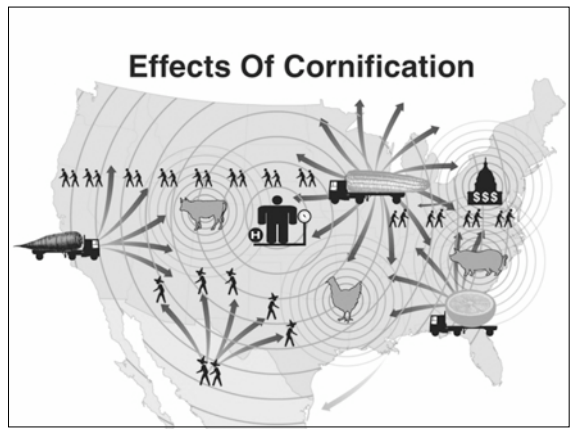
**TOO FEW EGGS
IN TOO FEW BASKETS?**

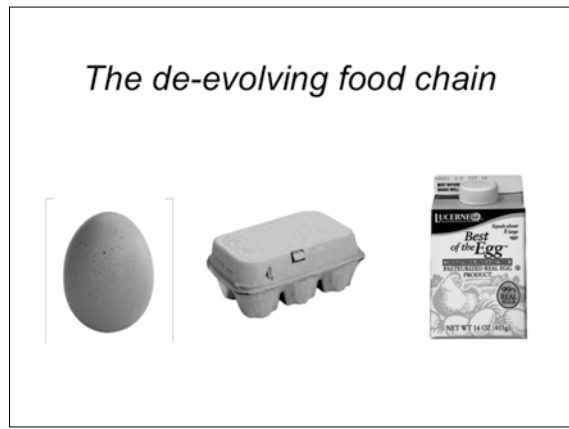
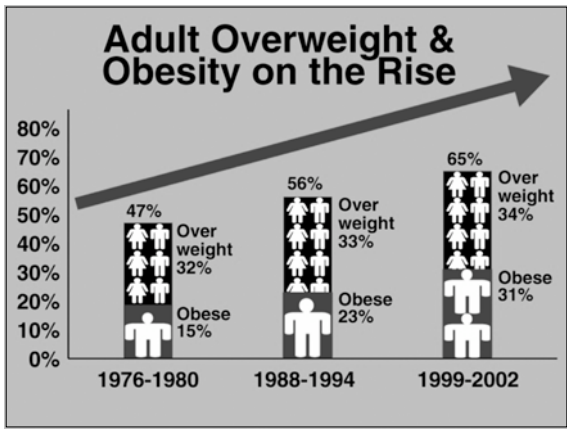
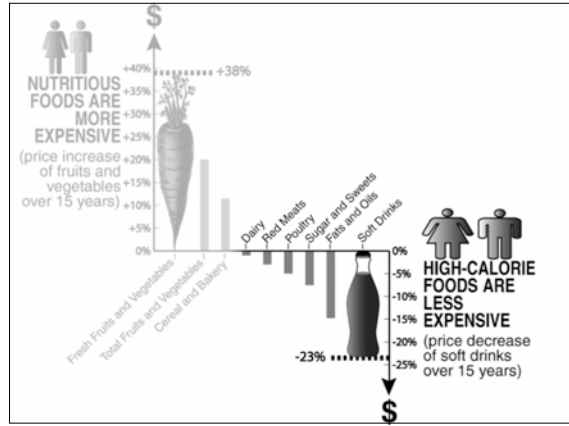
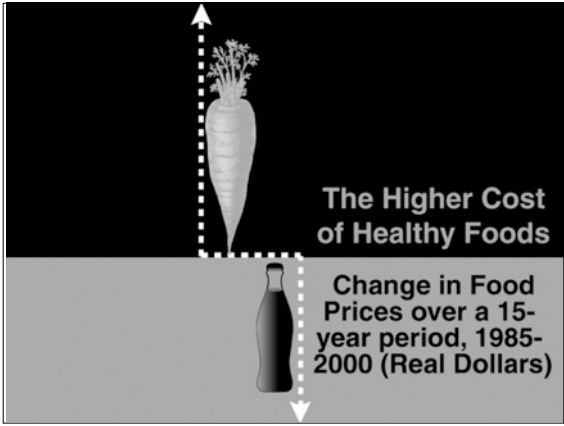
84% of Commodity Credit Corporation spending is directed to just five crops:

Corn 32%
Cotton 20%
Wheat 13%
Soybeans 13%
Rice 6%









Putting the Animal Factory
Out to Pasture



“The whole problem of health in
soil, plant, animal, and man is
one great subject.

—*Sir Albert Howard*

www.watershedmedia.org

