

# 2022 HENRY COUNTY HEALTH DEPARTMENT

ALABAMA  
PUBLIC  
HEALTH

Provides caring, quality services that affect every person in Henry County—not just those who walk through health department doors.



**The Bureau of Clinical Laboratories provides quality laboratory results** for the following programs: maternity, family planning, child health, STD, tuberculosis control, diabetes, HIV/AIDS, newborn screening and environmental services.



**Alabama's Children's Health Insurance Program** increases access to care for eligible, uninsured children ages birth through 18, and served 683 Henry County children in the month of September 2022.



**WIC** provides nutrition assessment, education, and nutritious foods at no cost to a monthly average of 301 limited-income pregnant, breastfeeding, and postpartum women, infants, and children up to age 5 at nutritional risk in Henry County.



**Licensed public health social workers** provide case management/care coordination for family planning, newborn screening disorders, elevated lead levels, home health and other services.



**Performed 283 field activities** including issuing new onsite sewage disposal permits, site evaluations, land applications, and overseeing treatment and disposal of septage and other permitted wastes.



**Prevents the occurrence and spread of rabies** within the human and animal population of Henry County by investigating reports of 8 exposures to animal bites.



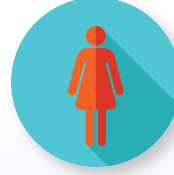
**Provided confidential testing, treatment, counseling, partner referral, and epidemiologic investigations** for most sexually transmitted diseases in 246 support nurse visits.



**Confidential and professional family planning services** were provided in 574 visits by Henry County residents. A wide range of services is available regardless of income to prevent unintended pregnancies through education and contraceptive services.



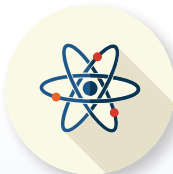
**Offers a tobacco Quitline free to Alabama residents.** Free call, free coaching, and free nicotine patches (if medically eligible and in coaching) to help tobacco users quit. Call 1-800-QUIT NOW or go to [Quitnowalabama.com](http://Quitnowalabama.com)



**Provides breast and cervical cancer screening** to uninsured and underinsured women age 40-64. The Henry County Health Department served 19 women in 2022.



**Newborn screening** detects genetic or metabolic conditions, thereby reducing morbidity, premature death, intellectual and other developmental disability through early detection and follow-up.



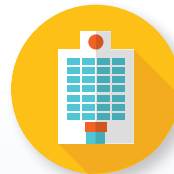
**Regulates the possession, use and disposal of radioactive materials and equipment,** and administers a radon and naturally occurring radioactive materials program.



**Responds to storms, floods, disease outbreaks, nuclear power plant accidents, and other emergencies.** Employees provide training, coordination, and response to disasters and partner with local first responders for health, medical, and social services.



**Assists rural and medically underserved areas** by working with health care providers and organizations to prepare grants and provide workforce development.



**Protects patients/residents of health care facilities** from abuse and neglect. Works to ensure facilities comply with state and federal standards. Requires corrective action when surveys find facilities are noncompliant. Assures that emergency medical services meet or exceed established standards.

# 2022 ANNUAL REPORT OF THE HENRY COUNTY HEALTH DEPARTMENT



**Provided 1,623 home care visits** that include skilled nursing, physical therapy, medical social work and personal care services through Medicare-certified home health agencies.



**Issued 3,352 certified copies of vital records** on a while-you-wait basis regardless of where in the state the event occurred.



**Conducted 219 inspections of restaurants, schools, and other food service and lodging establishments** including child care centers to ensure standards in environmental health are maintained.



**Provided visits for tuberculosis testing, medication, physician services, epidemiologic investigations, hospitalization, and laboratory services** for those with known or suspected TB disease and their contacts.



**Provided 53 immunizations** including childhood and adult vaccines. Provided Alabama Certificates of Immunization required for school entry.

The Alabama Department of Public Health (ADPH) works closely with your community to protect the public's health through emergency preparedness activities, health care coalitions, training, and response.

The mission of the ADPH is to promote, protect, and improve the health of individuals and communities in Alabama, and has served Henry County since 1936. Our purpose is to provide caring, high quality, and professional services for the improvement and protection of the public's health through disease prevention and the assurance of public health services to resident and transient populations of the state regardless of social circumstances or the ability to pay.

All services from the ADPH are provided to eligible persons without regard to race, color, creed, national origin, political beliefs, handicaps, or sex. Payment for services varies. No one will be denied services if unable to pay.

**The Henry County Health Department offers clinical and environmental services, WIC pick up, Family Planning pick up, and STD and Immunization services to the public.**

**Home health services are available through the Houston County Health Department.**

**Certified copies of birth, death, marriage and divorce certificates may be obtained from the health department.**

**P.O. Box 86, 500 Kirkland Street, Abbeville, Alabama 36310 • Office: (334) 585-2660**

**Hours of Operation: 8:00 a.m.-5:00 p.m. Monday through Friday. Call for appointments.**