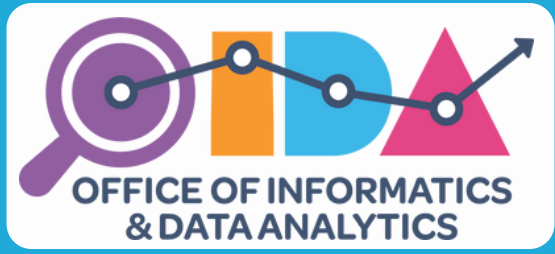


The OIDA Bulletin

July 2022

Our mission is to ensure that the determinants and distribution of disease and health for Alabama are accurately assessed and the information is disseminated in a meaningful way.



Director & State Epidemiologist:
Sherri Davidson, PhD, MPH



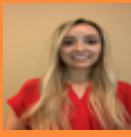
Deputy Director, CDC CEFO:
Melissa Morrison, MPH



Assistant to Director:
Dyan Hunter



Senior Data Analyst:
MisChele Vickers, MPA



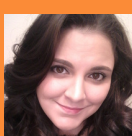
Health Communication Specialist:
CDC Foundation
Elizabeth Pugh



Data Analyst:
CDC Foundation
Megan Parks



Project Specialist:
CDC Foundation
Michelle Patrick



Epidemiologist Intern:
Brittany Turner

Race	Cases	Deaths
American Indian or Alaska Native	0.4%	0.0%
Asian	2.6%	6.3%
Black or African-American	19.2%	18.8%
Native Hawaiian or Other Pacific Islander	0.1%	0.0%
White	66.6%	69.4%
Other race	5.0%	9.4%
Two or more races	0.7%	0.0%
Race unknown	15.4%	6.3%

Ethnicity	Cases	Deaths
Hispanic or Latino	0.8%	0.0%
Not Hispanic or Latino	80.1%	96.9%
Ethnicity unknown	19.1%	3.1%

- Developing race and ethnicity data toolkit and training session
- Intern working on racial and ethnicity data improvement



12 employees in 5 bureaus and 1 district attended the CSTE Conference in June



District Epis participated in ID&O Training

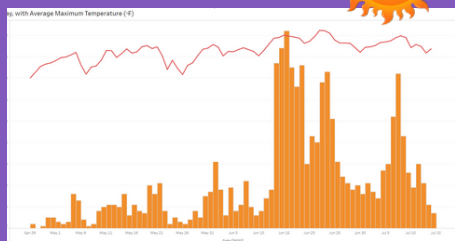
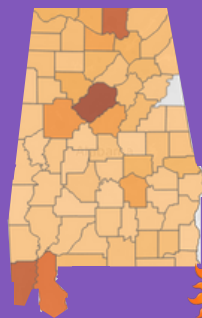
Data Release Policy in development



OIDA's data analysis team has been assisting the Newborn Screening Program with their annual reporting requirements for the CDC by working to produce a patient-level data file containing key newborn hearing screening metrics for babies born in 2020.



Statewide Heat-Related Illness Emergency Department Visits



RCKMS CORNER

Monkeypox 3.0 Release 20220713



Department Data Assessment Interview Progress



Data Systems identified
As of July 21, 2022