

CONGENITAL HEART DEFECTS – AN OVERVIEW OF THE MOST COMMON BIRTH DEFECT

Satellite Conference and Live Webcast

Monday, January 8, 2024, 1:00-2:00 p.m. (Central Time)

2:00-3:00 p.m. (Eastern) ■ 12:00-1:00 p.m. (Mountain) ■ 11:00 a.m.-12:00 p.m. (Pacific)

Congenital heart defects are the most common type of birth defect affecting approximately 40,000 babies born in the United States every year. Critical Congenital Heart Disease is a group of the most serious heart disorders present at birth that results in a wide range of problems with the heart structure and function. Newborn screening for Critical Congenital Heart Defects is a tool that can identify some of the babies with these disorders, so that they can receive prompt care and treatment to prevent disability and death.

FACULTY

Shaine A. Morris, MD, MPH

Medical Director

Cardiovascular Genetics Program and Fetal Cardiology Program

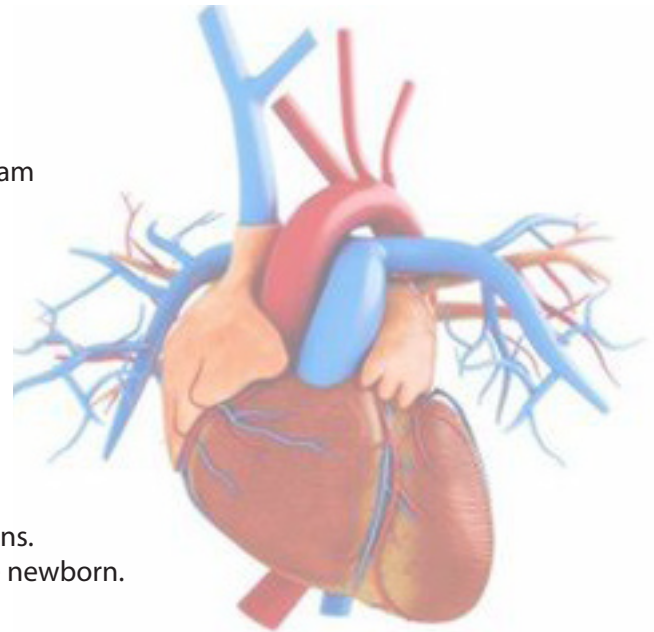
Baylor College of Medicine and Texas Children's Hospital

Rachael Montgomery, BSN, RN

Nurse Manager

Alabama Newborn Screening Follow-up Division

Alabama Department of Public Health



PROGRAM OBJECTIVES

1. Describe birth defect case classifications.
2. List advantages and challenges of heart defect classifications.
3. Discuss the purpose of the pulse oximetry screening in the newborn.
4. Describe pulse oximetry equipment recommendations.
5. Implement pulse oximetry training components.
6. Identify steps for pulse oximetry screening.
7. List steps for pulse oximetry reporting.

CONFERENCE DETAILS

Target Audience: Physicians, nurses, social workers, counselors, laboratory staff, and other healthcare professionals

Continuing Education: Nurses & social workers (pending)

**Non-ADPH employees are charged a fee to receive CE Certificates.*

Additional information can be found at www.alabamapublichealth.gov/alphn

Registration: Available at www.alabamapublichealth.com/alphn

Technical Information: To receive complete technical information you must register at www.alabamapublichealth.com/alphn.

Webcast - Watch with RealPlayer or Windows Media Player.

Test your computer with the "test connection link" at www.alabamapublichealth.com/alphn

Audio - To listen by phone, call 1-888-557-8511. Enter access code 972-1530 #. Press # again to listen to the conference.

On Demand - Available on our website two days after live broadcast.

Conference Materials: Available at www.alabamapublichealth.com/alphn approximately one week before the program.

Conference Details Questions: Call: 334-206-5618 | Email: alphn@adph.state.al.us