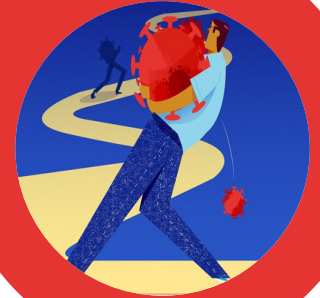


# FOR SOME, IT'S FAR FROM OVER: THE LONG-TERM SYMPTOMS OF COVID-19



## Live Webcast

Wednesday, May 3, 2023; 12:00-1:00 p.m. (Central Time)

1:00-2:00 p.m. (Eastern) • 11:00 a.m.-12:00 p.m. (Mountain) • 10:00-11:00 a.m. (Pacific)

On May 11, 2023, the Department of Health and Human Services plans to officially end the COVID-19 public health emergency. Yet by some estimates, at least 10% of the acute COVID-19 cases result in symptoms persisting over months or even years -- a condition often referred to as 'long COVID' that limits daily lives of millions of people worldwide. According to the CDC ([www.cdc.gov/nchs/covid19/pulse/long-covid.htm](http://www.cdc.gov/nchs/covid19/pulse/long-covid.htm)), 16.7% of all adults in Alabama have experienced long COVID, with additional vulnerability conferred by pre-existing conditions. In this program, we will explore the history and epidemiology of 'long COVID' and begin to understand its etiology and manifestations.

## FACULTY:

Stella Aslibekyan, PhD

Senior Scientist, Genetic Epidemiology, 23andMe

Adjunct Professor, Epidemiology

University of Alabama at Birmingham and University of Kentucky



ALABAMA REGIONAL CENTER FOR INFECTION PREVENTION  
AND CONTROL TRAINING AND TECHNICAL ASSISTANCE  
The University of Alabama at Birmingham

## PROGRAM OBJECTIVES:

1. To describe the history, epidemiology, alternative definitions, risk factors, and symptoms of long COVID-19.
2. To recognize the variety of long COVID-19 lived experiences.
3. To compare long COVID-19 to other sequelae of infectious diseases.

## CONFERENCE DETAILS:

Target Audience: Public health professionals, nurses, social workers, clinicians, health educators, other healthcare professionals, and infection preventionist specialists interested in learning more about long COVID or who provide health services to those reporting long-COVID symptoms.

Continuing Education: Nurses 1 hour and Social Workers 1 hour

*\*CEU credits for this program will be provided by the Deep South Center for Occupational Health and Safety*

*There is no fee to receive CEU credit. Additional information about applying for credit will be provided during the program*

Registration: Available at [www.alabamapublichealth.com/alphtn](http://www.alabamapublichealth.com/alphtn)

Technical Information: To receive complete technical information you must register at [www.alabamapublichealth.com/alphtn](http://www.alabamapublichealth.com/alphtn).

Webcast - Watch with RealPlayer or Windows Media Player.

Test your computer with the "test connection link" at [www.alabamapublichealth.com/alphtn](http://www.alabamapublichealth.com/alphtn)

Audio - To listen by phone, call 1-888-557-8511. Enter access code 972-1530 #.

Press # again to listen to the conference.

On Demand - Available on our website two days after live broadcast.

Conference Materials: Available at [www.alabamapublichealth.com/alphtn](http://www.alabamapublichealth.com/alphtn) approximately one week before the program.

Conference Details Questions: Call: 334-206-5618 | Email: [alphtn@adph.state.al.us](mailto:alphtn@adph.state.al.us)