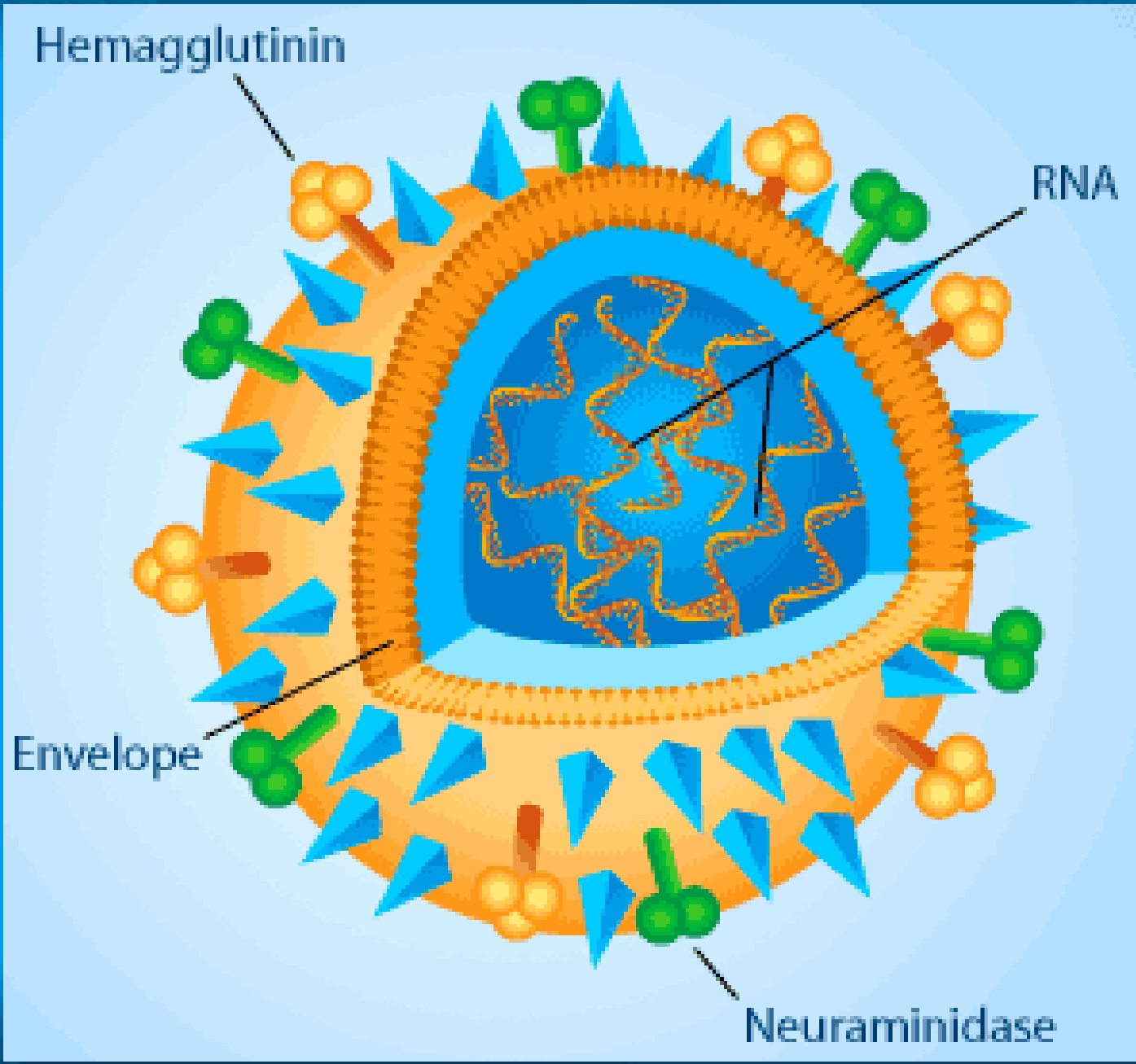
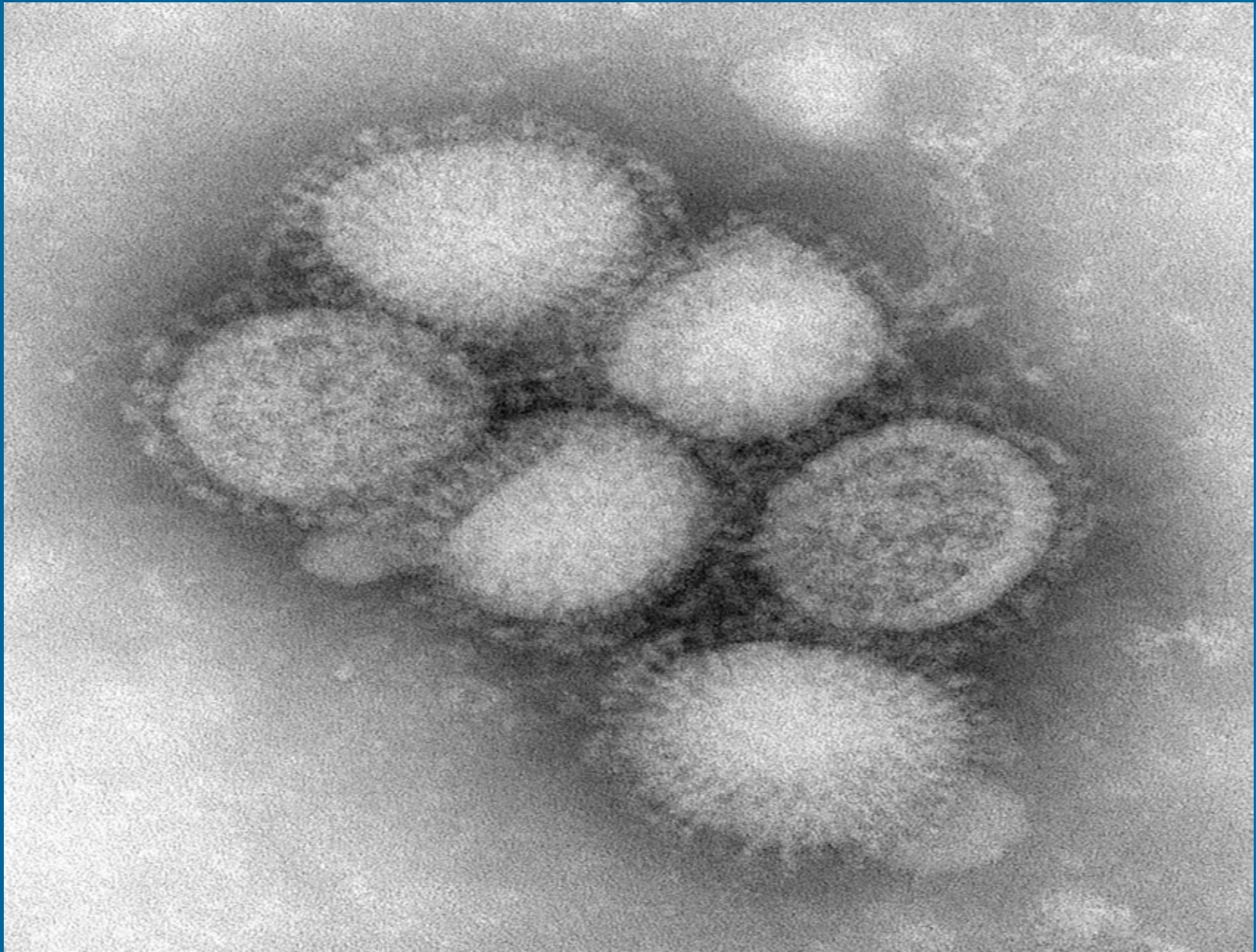


H1N1: Nurses Ready to Respond

**Satellite Conference and Live Webcast
Tuesday, October 6, 2009
3:00-4:30 p.m. Central Time**

**Produced by the Alabama Department of Public Health
Video Communications and Distance Learning Division**





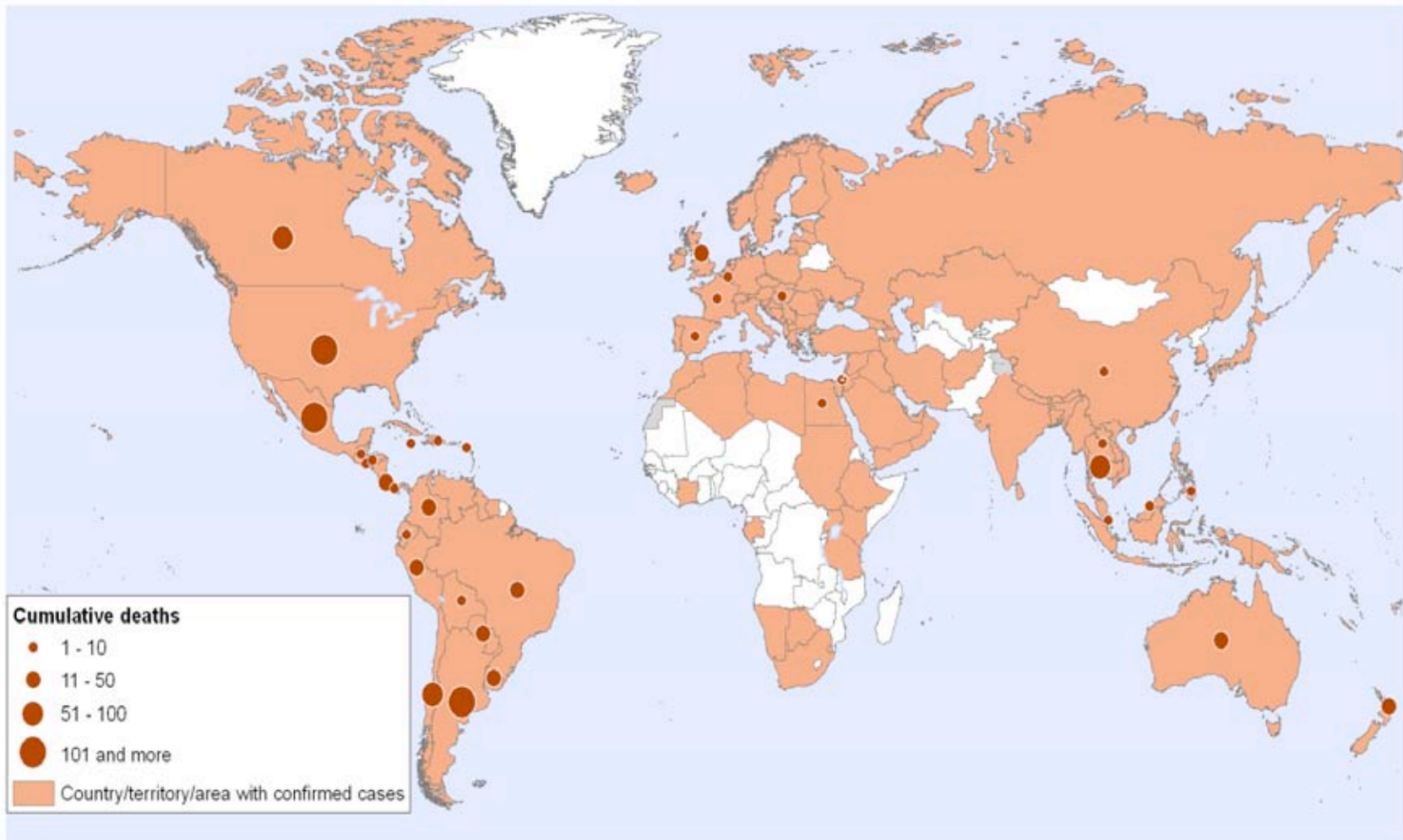
Necessary Conditions for Pandemic

- **Novel virus with general population susceptibility**
- **Efficient person-to-person transmission**
- **Must cause human disease**

Pandemic (H1N1) 2009

Status as of 31 July 2009

Countries, territories and areas with lab confirmed cases and number of deaths as reported to WHO



The boundaries and names shown and the designations used on this map do not imply the expression of any opinion whatsoever on the part of the World Health Organization concerning the legal status of any country, territory, city or area or of its authorities, or concerning the delimitation of its frontiers or boundaries. Dotted lines on maps represent approximate border lines for which there may not yet be full agreement.

Map produced: 04 August 2009 13:00 GMT

Data Source: World Health Organization
Map Production: Public Health Information
and Geographic Information Systems (GIS)
World Health Organization

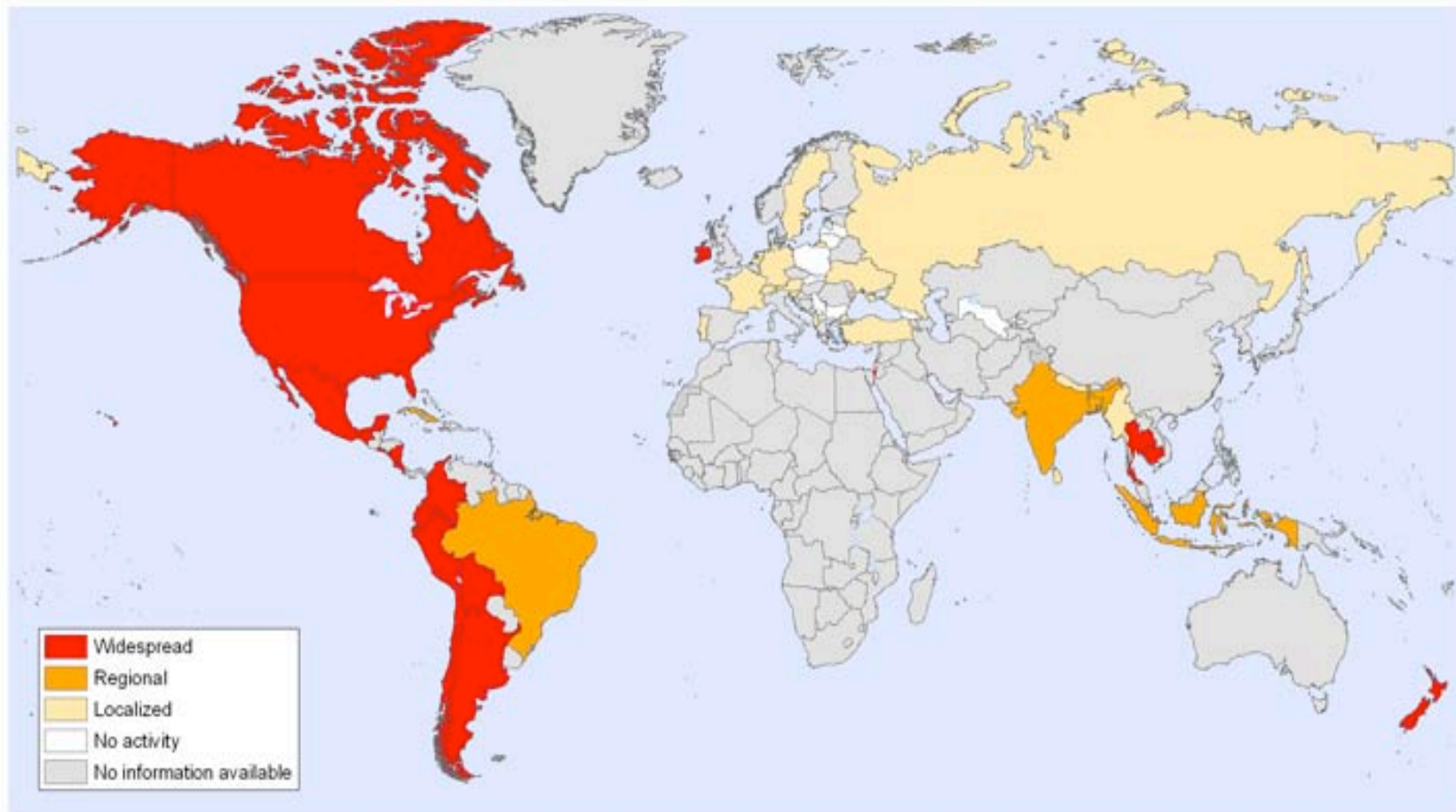


© WHO 2009. All rights reserved



Status as of: week 38, 2009 (14–20 September)

◀
Previous



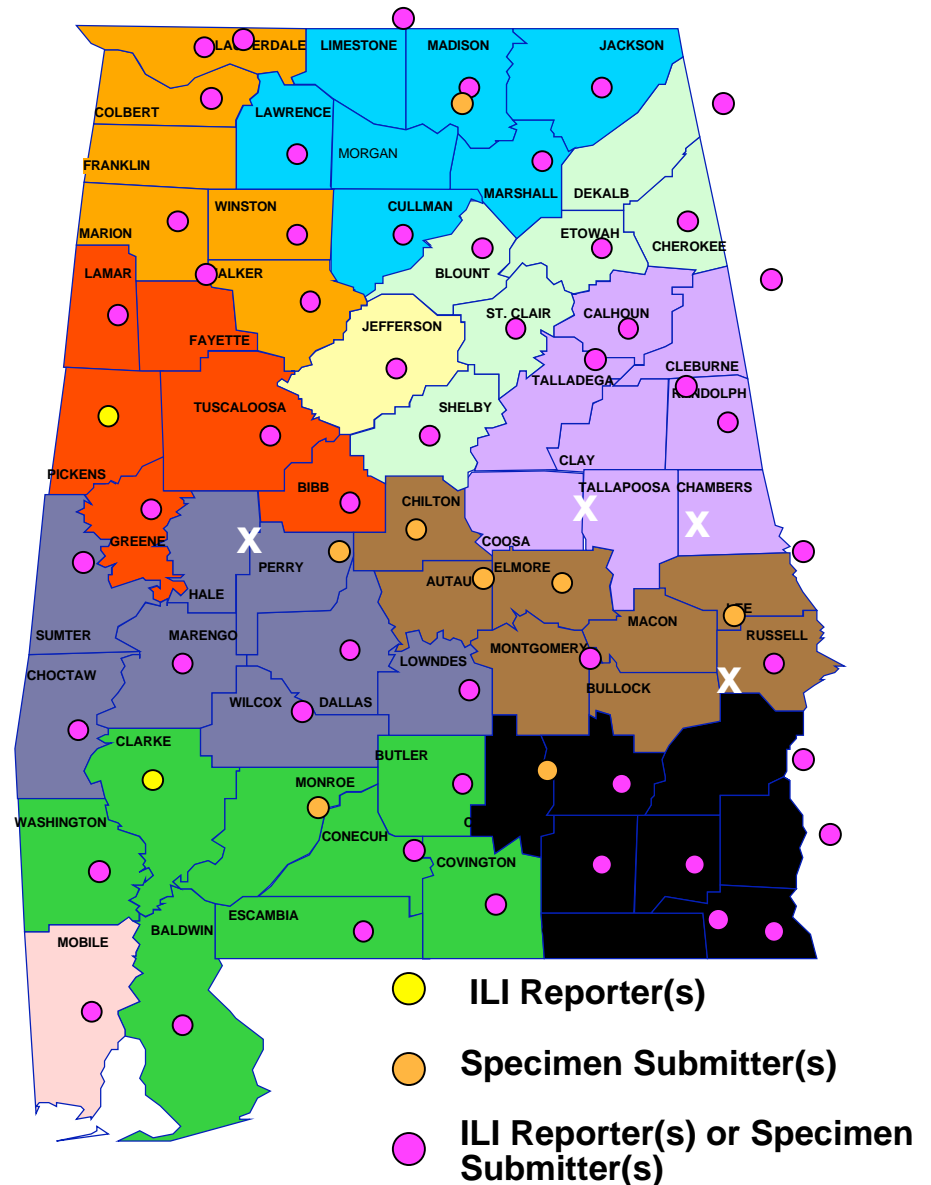
Influenza Surveillance Program

- **Goal - monitor year round for the extent and types of influenza virus**
- **Confirmatory testing by public health laboratory**
 - **Hospitalized patients**
 - **Pregnant patients**
 - **Sample of patients seen at designated physician practices across the state**

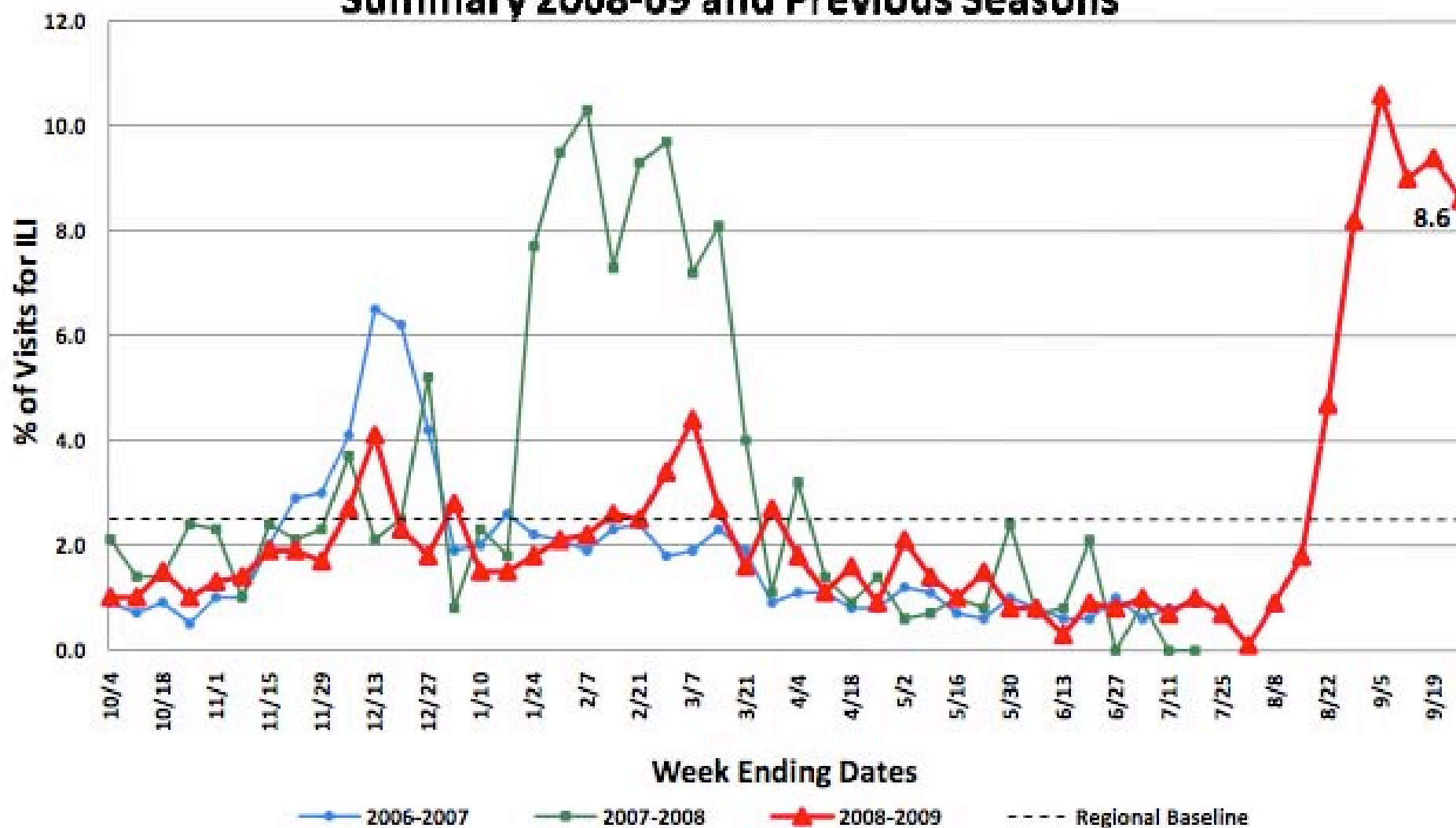
Influenza Surveillance Reporting Network Providers 2009-10 (as of 9/29/2009 11 AM)

PHA	ILI Reporters	Specimen Submitter	Estimated Population*
01	15	14	297,001
02	13	17	768,712
03	11	10	261,759
04	9	14	659,503
05	11	10	521,425
06	7	5	330,927
07	8	11	145,478
08	7	8	612,324
09	12	13	348,002
10	12	14	310,450
11	7	2	406,309
Total	112	118	

*Alabama Population Estimates from U.S. Census Bureau for 2008
(released 7/2009)



Percentage of Visits for Influenza-like Illness (ILI) Reported by the US Outpatient Influenza-like Illness Surveillance Network (ILINet), Alabama Summary 2008-09 and Previous Seasons



Influenza Activity Map

- Report weekly influenza activity to CDC, published as the Weekly Influenza Surveillance Report
- The maps display influenza-activity levels
 - No activity
 - Sporadic
 - Local
 - Regional
 - Widespread

2008 – 2009 Season

Week 38: September 20, 2009 – September 26, 2009

Influenza Activity Level: Widespread

Synopsis: Significant ILI activity (>2.5%) in more than half of the 11 Public Health Areas and lab evidence of novel influenza A (H1N1).

Influenza-Like Illness ¹



Laboratory Confirmed ²

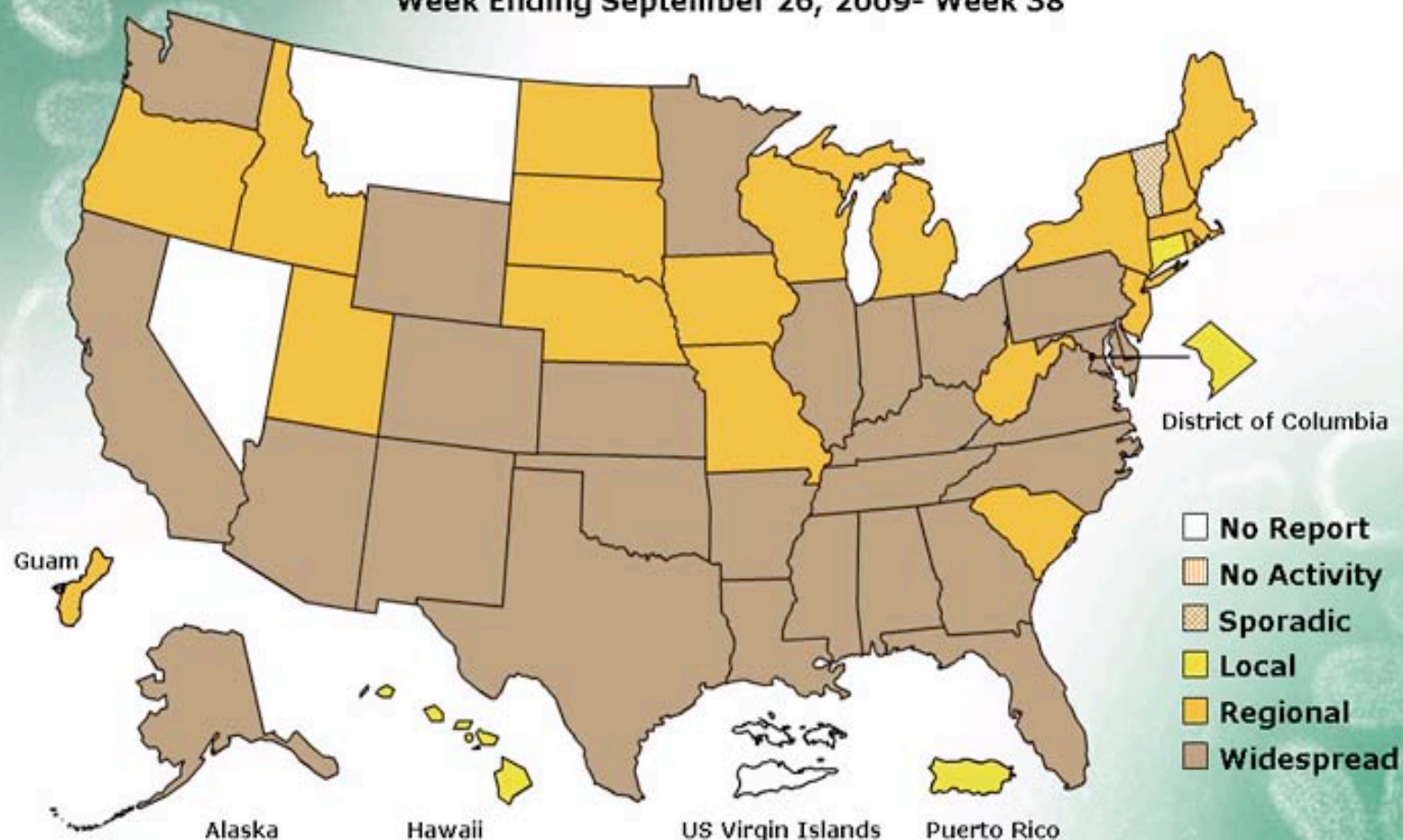


FLUVIEW



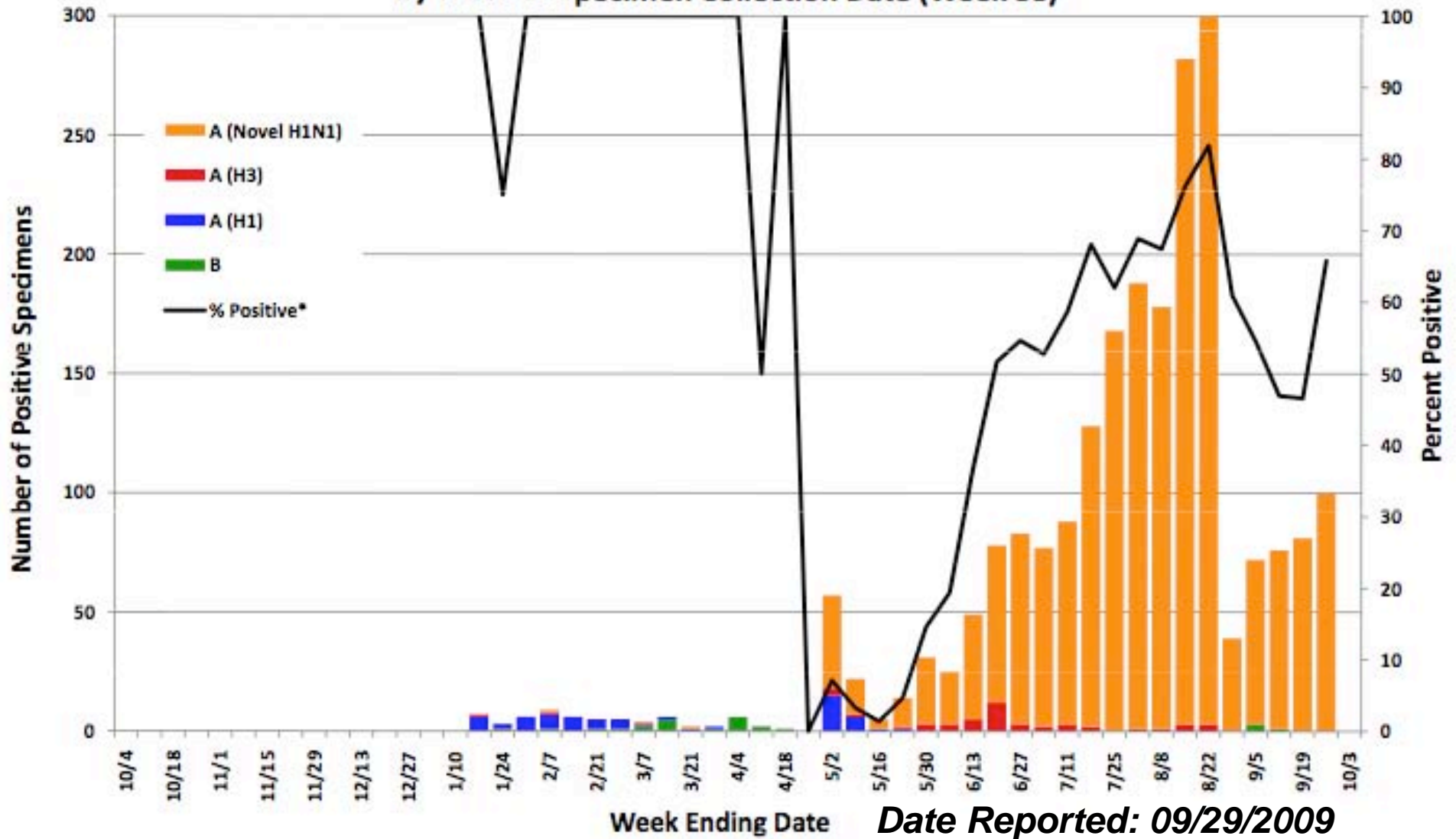
A Weekly Influenza Surveillance Report Prepared by the Influenza Division
Weekly Influenza Activity Estimates Reported by State and Territorial Epidemiologists*

Week Ending September 26, 2009- Week 38



*This map indicates geographic spread and does not measure the severity of influenza activity.

Epidemiology/Surveillance
Bureau of Clinical Laboratories, Alabama Summary, Influenza Season 2008-2009
by Week of Specimen Collection Date (Week 38)



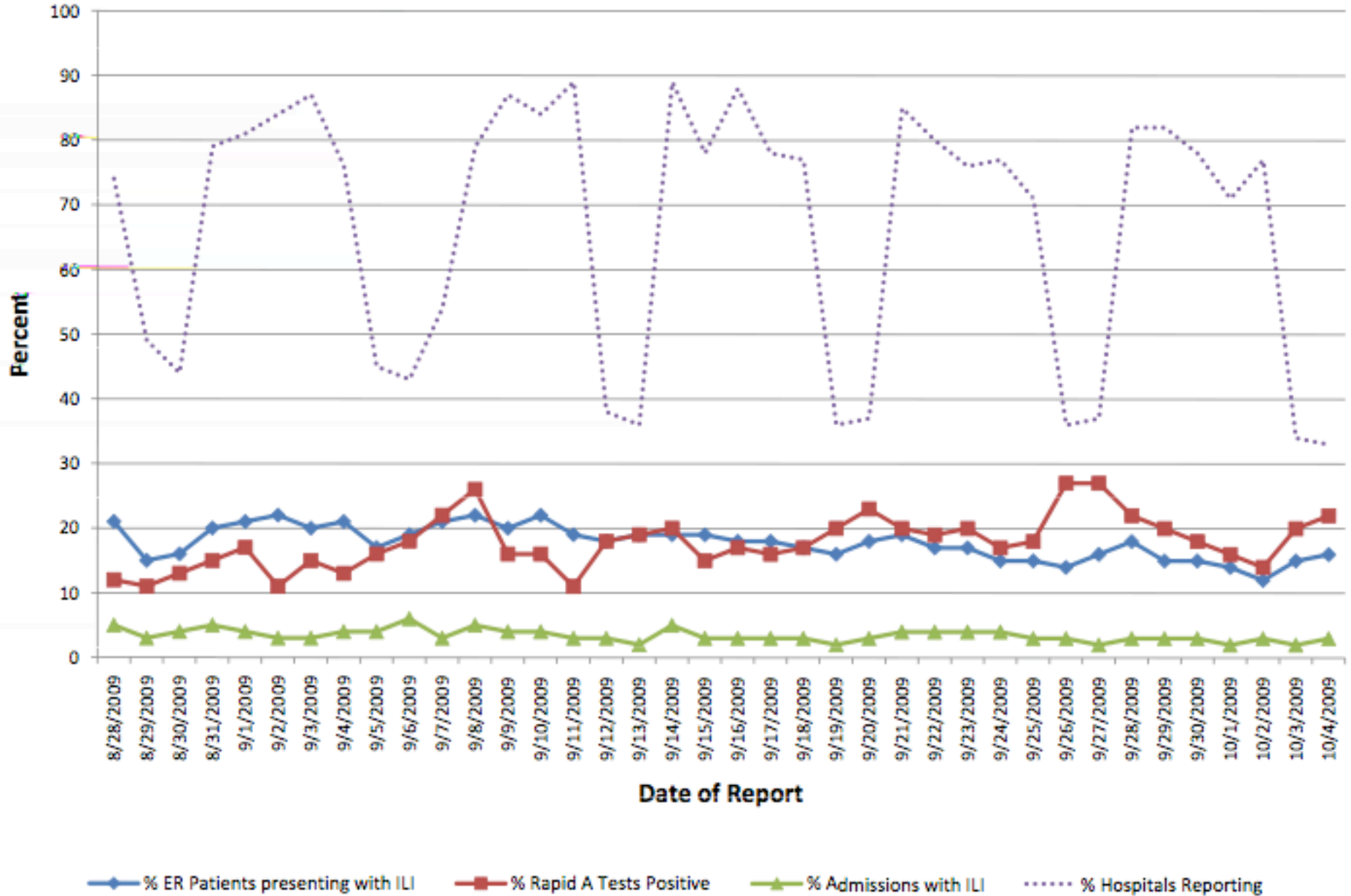
AIMS Summary

	9/21	9/22	9/23	9/24	9/25	9/26	9/27*
Staffed beds - % Available	29	25	23	20	22	27	29
Adult ICU - % Available	24	22	21	17	22	19	24
Pediatric ICU - % Available	45	38	48	42	47	60	40
Adult Med/Surg - % Available	30	22	19	19	24	29	32
Pediatric Med/Surg - % Available	43	40	35	39	43	35	38
Number of Hospitals Reporting Beds	63	60	59	59	56	32	31
ER - % Presenting with ILI	19	17	17	15	15	14	16
Rapid Test A - % Positive	20	19	20	17	18	27	27
Admissions - % with ILI	4	4	4	4	3	3	2
Number of Hospitals Reporting ILI	77	73	69	70	65	33	34

***Total ILI ER visits: 494; Total Positive Rapid A Tests: 79; Total ILI Admissions 14**

Data obtained: 09/28/2009

AIMS ILI Module Summary



Data obtained: 09/28/2009

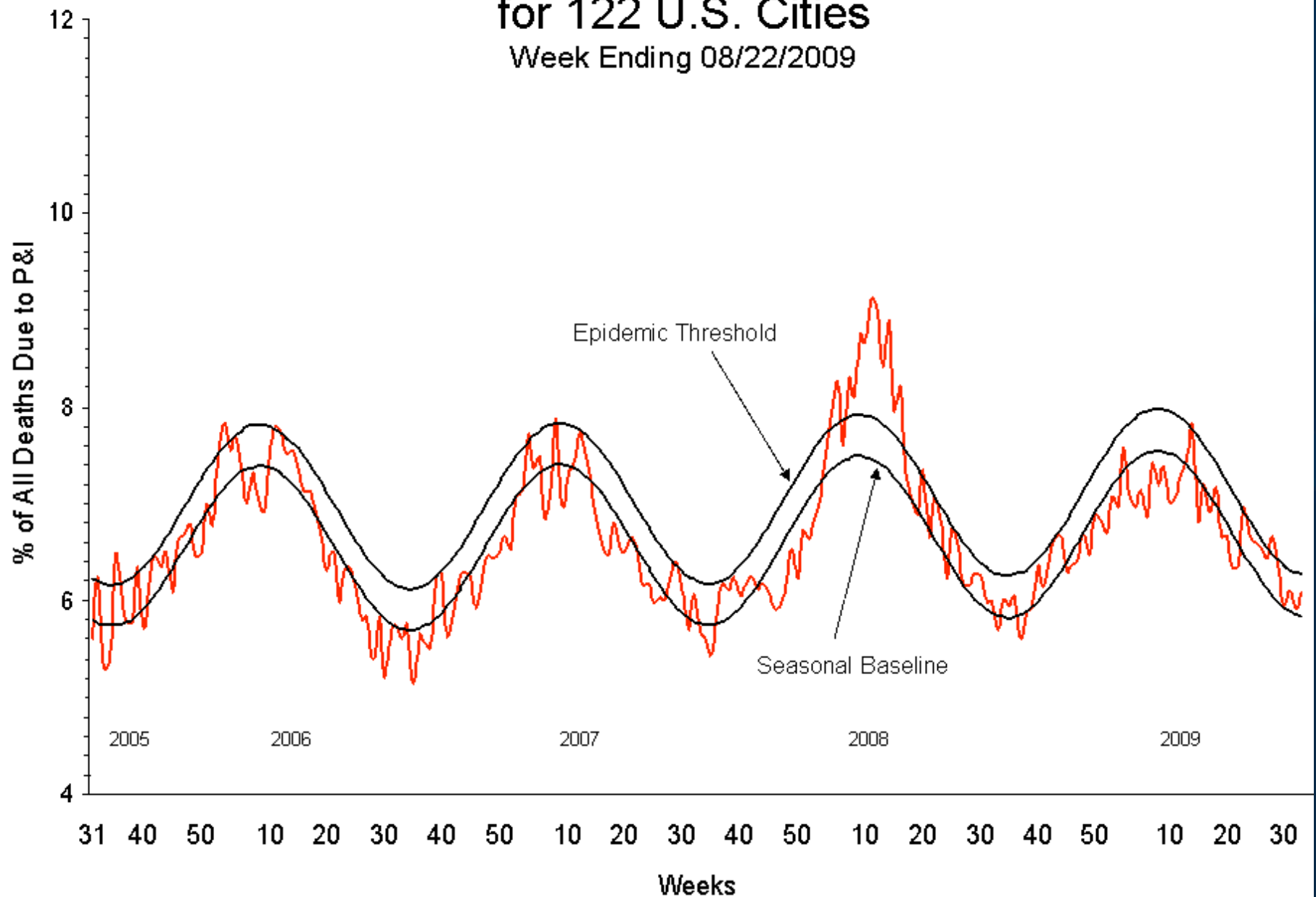
Pneumonia and Influenza Mortality Surveillance

- **Jefferson, Montgomery, and Mobile Counties participate in CDC's 122 Cities Mortality Reporting System (122 CMRS)**
- **A national surveillance system that reports deaths attributed to pneumonia and influenza (P&I) on death certificates**

Pneumonia and Influenza Mortality

for 122 U.S. Cities

Week Ending 08/22/2009



Target Groups

- **Persons aged 6 months through 24 years**
- **Pregnant women**
- **Household contacts of infants under 6 months of age**

Target Groups

- **Healthcare and emergency services personnel**
- **Persons aged 25 through 64 years who are at higher risk for H1N1 because of chronic health disorders**

Likely Vaccine Delivery Sites

- **Schools**
- **Private providers**
- **Hospitals**
- **Large employers**
- **Pharmacies and other community immunizers**