

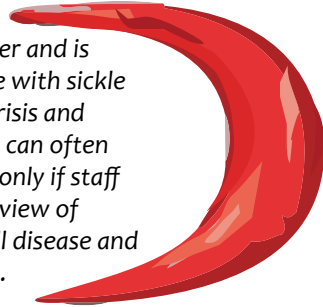
TAKING CARE OF THE SICKLE CELL PATIENT IN EMERGENCIES: FROM DIAGNOSIS TO EMERGENCY MEDICAL TRANSPORT TO EMERGENCY HOSPITAL SERVICE

Satellite Conference and Live Webcast

Tuesday, October 18, 2011, 10:00 a.m.-12:00 p.m. (Central Time)

11:00 a.m.-1:00 p.m. (Eastern) 9:00-11:00 a.m. (Mountain) 8:00-10:00 a.m. (Pacific)

Sickle cell disease is the most common hereditary blood disorder and is found almost exclusively in African-Americans. When someone with sickle cell experiences pain associated with the disease, it's called a crisis and treatment needs to be administered quickly. A sickle cell crisis can often be managed efficiently and quickly in an emergency room, but only if staff recognize the symptoms. Program faculty will provide an overview of general medical issues and emergency care specific to sickle cell disease and discuss ways to improve treatment in emergency departments.



PROGRAM OBJECTIVES:

1. Provide a general overview of Hemoglobinopathies including sickle cell anemia and sickle cell trait.
2. Describe common physical manifestations of sickle cell anemia and trait in children and adults.
3. Identify precipitating circumstances which can bring on emergencies in sickle cell anemia and trait.
4. Explain sickle cell crisis.
5. Review case studies to emphasize adequate diagnosis and treatment of sickle cell disease.



CONFERENCE DETAILS:

Target Audience: Nurses, social workers, EMTs, paramedics, hospital emergency room personnel, any health care worker treating patients with sickle cell disease

Continuing Education: Nurses 2 hours, Social Workers 1.75, EMTs 2 hours (Contact Katherine.Hert@adph.state.al.us)

Registration: www.adph.org/alphntn

Technical Information: To receive complete technical information you must register at www.adph.org/alphntn

Satellite - Live satellite conference on C band (analog).

Webcast - Watch with RealPlayer or Windows Media Player. Test your computer with the "test connection link" at www.adph.org/alphntn

Audio - To listen by phone, call 1-888-557-8511. Enter access code 972-1530 #. Press # again to listen to the conference.

On Demand - Available 2-3 business days after the live broadcast from the On Demand page of our website.

Conference Materials: Posted on our website approximately one week before the program for registered participants.

Conference Details Questions: Call: 334-206-5618 | Email: alphntn@adph.state.al.us

FACULTY:

W. Elwin Crawford, MD
State EMS Medical Director
Office of EMS and Trauma
Alabama Department of Public Health

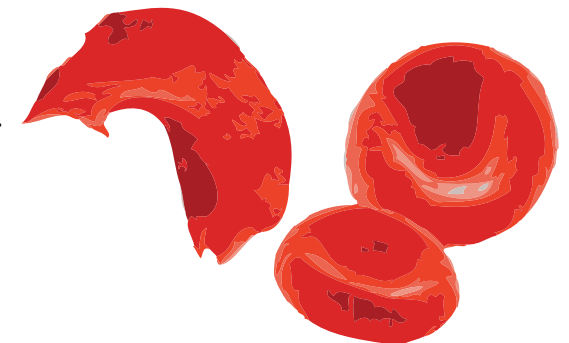
Glenn Davis
Director of Emergency Medical Services Research
Institute for Rural Health Research
The University of Alabama
Tuscaloosa, Alabama

Priscilla Davis, PhD
Professor
Communicative Disorders
The University of Alabama
Tuscaloosa, Alabama

Pamela Payne-Foster, MD, MPA
Deputy Director
Institute for Rural Health Research
The University of Alabama
Tuscaloosa, Alabama

Eva Greene
Executive Director
Sickle Cell Association of America-West Alabama Chapter
Northport, Alabama

Brenda Merriweather, MSN, RN
Sickle Cell Program Coordinator
Baptist Hospital Systems



****The Alabama Department of Public Health is an approved provider of continuing nursing education by the Alabama State Nurses Association, an accredited approver by the American Nurses Credentialing Center's Commission on Accreditation****