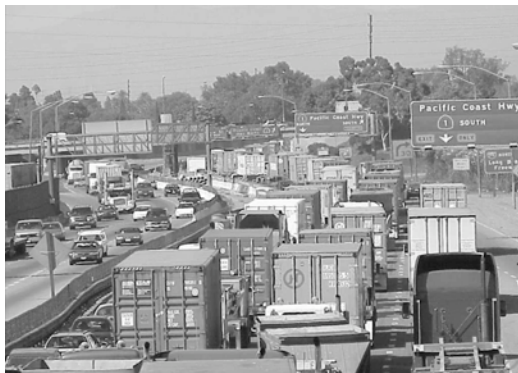


**Community-Academic
Partnerships to Improve the
“Built Environment”
in EJ Communities Impacted
by Ports & Goods Movement**

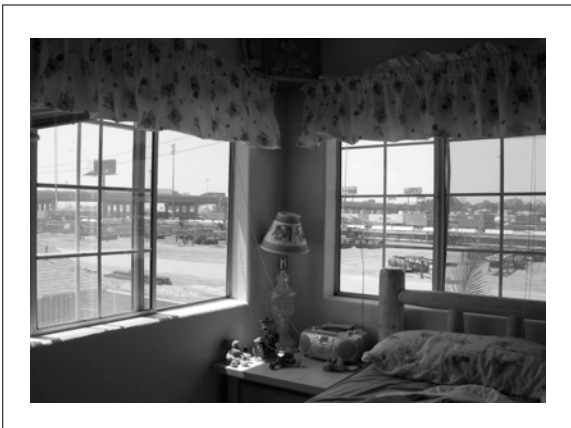
**Weight of the Nation Conference
Washington, D.C.
July 2009**

Produced by the Alabama Department of Public Health
Video Communications and Distance Learning Division





**What "Goods Movement"
Means for Recreation and
Breathing Healthy Air**





THE Impact Project
Trade, Health Environment Impact
Project
www.THEImpactProject.org
*Funded by The California Endowment
and
The Kresge Foundation*





THE Impact Project
www.TheImpactProject.org
Andrea Hricko: ahricko@usc.edu