

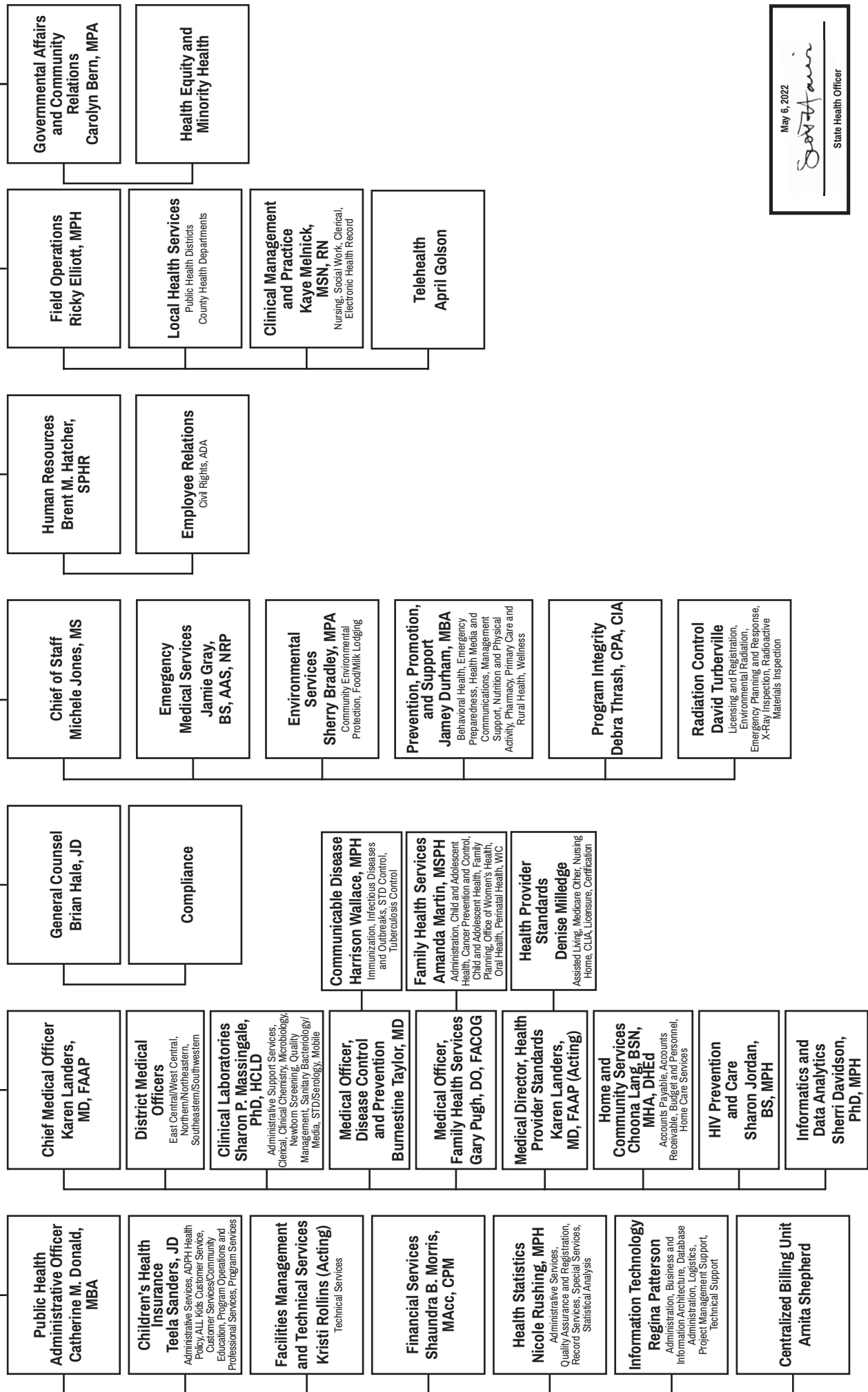
Supporting Document

Topic	Page
Organizational Charts	Attachment



State Government
State Board of Health
State Committee of Public Health

State Health Officer
Scott Harris, MD, MPH



May 6, 2022
Scott Harris
State Health Officer

**Bureau of Family Health Services
Medical Officer**
Gary Pugh (PHPD)

Bureau Director - Amanda Martin (HSA 4)
Tom Russell (ASA 3)
Ruthie Spencer (RSE)

Administrative Division
Director
Dan Milstead (HSA 3)
Assistant Director
Claudia Cautchen (SR ACCT)
Jessica Hadaway (ACCT)
Greg Roberts (AT)

Tom Russell (ASA 3)

Financial Management
 Dan Milstead (HSA 3)
 Claudia Cautchen (SR ACCT)
 Jessica Hadaway (ACCT)
 Greg Roberts (AT)

Contract Management
 Vacant (HSA 1)

Cancer Prevention and Control Division
Director
Nancy Wright (HSA 3)
Assistant Director
Julie Till (NM)
 Misty Price (ASA 3)

Cancer Prevention
 Vacant (HSA 2)
 Tonya Gandy (HSA 1)
 Lakita Hawes (PHE)

Cancer Epidemiology
 Justin George (Epi Sup)
 Tim Feuser (Epi Sr)
 Edana Huffman (Epi Sr)
 Mirvais Zhuben (Epi Sr)
 Shirley Williams (RSE)

Cancer Registry
 Arleta Brice (HSA 2)
 Vacant (PHRA 2)
 Mark Jackson (CTR Sr)
 Farzana Salim (PHRA 3)
 Vacant (PHRA 2)
 Angela Geson (PHRA 2)
 Latunya Scott (PHRA 1)
 Cassandra Ghaz (PHRA 2)
 Elaine Wooden (PHRA 1)
 Vacant (ASA 3)

Breast and Cervical Cancer
 Julie Till (NM)
 Vacant (HSA 2)
 Stephen Jaye (HSA 1)
 Vacant (HSA 1)
 Kelli Hardy (NC)
 Rhonda Hollon (SW Sr)
 Maxine Hawthorne (ASA 2)
 Tiffany Fields (ASA 2)
 Caroline Jones (ASA 2)
 Pattie Parker (ASA 2)
 Shandra Graham (ASA 2)
 Hazel Cunningham (SW Sr)
 Vacant (HSA 1)
 Amy Toner (NC)
 Karen Brock (NC)
 Cindy Brewer (NC)

Perinatal Health Division
Director
Carolyn Miller (HSA 3)
Assistant Director
Vacant
 Anna Moore (ASA 3)

State Perinatal
 Amy McAfee (NM)
 Tana-Kae Lewis (NS)
 Amy Stephens (NC)
 Trendle Samuel (NS)
 Janise Norman (NC)
 Cathy Nichols (NS)
 Toni Beasley (NC)
 Tonya Troncelli (NC)
 Shalisa Gaunt (ASA 2)
 April Montgomery (NM)
 CSierra Payne (NS)
 Shirley Daniel (NS)
 Vacant (NC)
 Lindsay Harris (NS)
 Eleanor Freeman (NC)
 Beth Shoemaker (NC)
 Vacant (NC)
 Karima Cuffey (NC)
 Vacant (ASA 2)

MCH Epidemiology
 Vacant (Epi Sup)
 Alice Ivy (Epi Sr)
 Julie Nighthorse (Epi Sr)
 Vacant (PHRA 3)
 Vacant (PHRA 2)
 Vacant (PHRA 3)
 Vacant (Epi)
 Vacant (Epi)
 Vacant (ASA 3)

Office of Women's Health
 Carolyn Miller (HSA 3)
 Vacant (ASA 2)

Well Woman Program
 Sabrina Horn (NS)
 Katie Campbell (NC)
 Rebekah Smay (SW Sup)
 Vacant (Stu Aide)

Well Woman Medical Director
 Deannah Maxwell (PHEP)

Child and Adolescent Health Division
Director
Meredith Adams (HSA 3)
Assistant Director
Sandy Powell (NM)
 Donna Hooks (ASA 3)
 Vacant (ASA 1)

Children's Health
 Sandy Powell (NM)
 Vacant (ASA 2)

Lead
 Seratia Johnson (NS)
 Nicole Byrd (NC)
 Ebony Williams (HSA 1)
 Erika Demmy (ASA 2)
 Vacant (ASA 2)

Healthy Child Care
Alabama
 Pashley McClain (NS)
 Renea Gilliland (NS)
 Nona Smith (ASA 2)
 Jason Kirkland (NC)
 Gwen Kennedy (NC)
 Sheila Davis (NC)
 Daphne Pate (NC)
 Ann Fox (NC)
 Karen Cobb (NC)
 Anna Macey (NC)
 Katie Collins (NC)
 Alicia Boykin (NC)
 Jeremy McCombs (NC)
 Judy Cunningham (NC)
 Teresa Good (NC)
 Vacant (NC)
 Pamela Seters (NC)
 Kay Rombokas (NC)
 Vacant (NC)
 Vacant (NC)

Social Work
 Kimberly Gordon (SWM)
 Elizabeth Rogers (SW Sup)
 Rebekah Smay (SW Sup)
 Vacant (SW Sup)
 Pamela Foster (SW Sr)
 Cynthia Brendel (SW Sr)
 Angela McCray (SW Sr)
 Heather Smith (SW Sr)

Adolescent Health Prevention
 Valerie Lockett (HSA 2)
 Jasmine Abner (PHE)
 April Fitten (PHE)
 Vacant (SW Sr)

WIC Division
Director
Allison Hatchett (HSA 3)
Assistant Director
Pam Galloway (Nur A)
 LaDeirda Lee (ASA 3)
 Sandy Liepins (ASA 2)

Nutrition Services
 Pam Galloway (Nur A)
 Margaret Stone (NAA)
 Mandy Darlington (NAA)
 Vacant (NAA)
 Laurie Wegy (NS)
 Sarah Weiss (NA)
 Vacant (Nur Sr)

WIC Training Clinic
 Vacant (NAA)
 Vacant (Nur Sr)
 Shaqueeta Scott (ASA 3)
 Vacant (ASA 2)

Breastfeeding/Peer Counseling
 Laurie Gregory (NS)
 Sarah Weiss (NAA)

Vendor Management
 Ashley Johnson (HSA 2)
 Debbie Free (AT)
 Pamela Pace (HSA 1)
 Archie Maggard (Spec Inv)
 Vacant (Spec Inv)
 Kenny Thomas (Spec Inv)

Operations Branch
 Vacant (HSA 2)
 Vacant (HSA 1)
 Phil Tucker (ASA 2)
 Lary Harris (St Clk)

State Agency Model (SAM) Project
 Vacant (HSA 2)
 Maggie Gates-Kilgore (PC-CE)

Family Planning Division
Acting Director
Amanda Martin (HSA 4)
Assistant Director
Jodi McGeeny (NM)
 Marquita Davis (ASA 3)

Family Planning Medical Director
 Lynda Gilliam (PHPD)

State Clinical Operations
 Vacant (NPD)
 Daluna Tatom (NPS)
 Neysa Hernandez (NPS)
 Stephanie Phillips (NPS)
 Krysta Hood (NPS)
 Deah Barnes (NPS)
 Kelli Hulsey (NPS)
 Kristi Wilkinson (NM)
 Thelma McDade (NC)

Plan First/Title X
 Jodi McGeeny (NM)
 Vacant (HSA 2)
 Rebekah Smay (SW Sup)
 Angela McCray (SW Sr)
 Pam Foster (SW Sr)
 Heather Smith (SW Sr)
 Adrimda Carter (PHE Sr)
 Vacant (PHE)
 NADA AL-Ass (PHE)
 Vacant (PHE)
 Vacant (PHE)
 Vacant (PHE)
 Teresa Washington (ASA 2)

Oral Health
 Tommy Johnson (DDH)
 Jennifer Morris (RDH)
 Mallory Rigby (HSA 1)
 Renee Gordon (ASA 2)

MCH Title V Director
 Tommy Johnson (DD)

MCH Coordinator
 Samille Jackson (HSA 2)

District MCH Coordinators
 Africa Patterson (SW Sr)
 Crystalae Walters (SW Sr)
 Demetra Peoples (SW Sr)
 Kelly Clark (SW Sr)
 Lee Andra Calvin (SW Sr)
 Stacy Hill (SW Sr)

Abbreviations:
 ACCT - Accountant
 Ck - Account Clerk
 Adm - Administrative Support Assistant
 CTR - Clinical Aide
 CTR Sr - Certified Tumor Registrar Senior
 DD - Dental Director
 Epi - Epidemiologist
 Epi Sr - Epidemiologist Senior
 Epi Sup - Epidemiologist Supervisor
 Inv - Investigator
 NA - Nurse Administrator
 NAA - Nutritionist, Assistant Administrator
 NC - Nurse Coordinator
 NM - Nurse Manager
 NPD - Nurse Practitioner Director
 NS - Nurse Practitioner Senior
 Nur - Nurse
 Nur Sr - Senior Nurse
 Nur Sr - Senior Nutritionist
 PC-CE - Project Coordinator (Contract Employee)
 PHE - Public Health Educator
 PHED - Public Health Physician Director
 PHES - Public Health Physician Senior
 PHS - Public Health Specialist
 PI Spec - Public Information Specialist
 PM-CE - Project Manager (Contract Employee)
 PRM - Physician Reviewing Monitor
 RDH - Registered Dental Hygienist
 RSE - Retired State Employee
 Spec Inv Chief - Special Investigator Chief
 SR ACCT - Senior Accountant
 St Clk - Stock Clerk
 SPT - State Professional Trainee
 Stu Aide - Student Aide
 SW - Social Worker
 SW Sr - Social Worker Senior
 SWM - Social Worker Manager
 TC - Training Coordinator

Atary DePugh, DO, F.A.C.O.G.
 Gary D. Pugh, D.O., F.A.C.O.G. *6/21/22* Date
Amanda C. Martin
 Amanda C. Martin, MSPH *6/21/2022* Date

Alabama Department of Rehabilitation Services Organizational Chart

Governor of Alabama

Alabama Board of Rehabilitation Services

Commissioner

Internal Audit
Audit Manager

Communications and Information
Governmental Relations Manager

Human Resource Development
HR Director
- Personnel
- Recruiting and Diversity
- Staff Development and Training

Computer Services
Chief Information Officer

Finance Division
Chief Financial Officer
- Accounting
- Purchasing
- Supply

Legal Division
General Counsel

Deputy Attorney General
- Governor's Office On Disability
- Americans with Disabilities Act
- State Rehabilitation Council

Rehabilitation Engineering / Assistive Technology

Early Intervention
Division Director
State Office Staff
Field Staff

Children's Rehabilitation
Assistant Commissioner
Field Supervision
State Office Staff
Field Staff

Vocational Rehabilitation-General
Deputy Commissioner
Field Supervision
State Office Staff
Business Relations
Field Staff

Vocational Rehabilitation-Blind/Deaf
Assistant Commissioner
Field Supervision
State Office Staff
Field Staff

June 13, 2022
Commissioner, Alabama Department of Rehabilitation Services
Samuel D. Sikes



Alabama's children and adults with disabilities

Children's Rehabilitation Service

Organizational Chart

