

BUTLER COUNTY HEALTH DEPARTMENT

NEWSLETTER

WE WOULD LIKE TO INTRODUCE YOU TO YOUR CLINIC
TEAM HERE TO ASSIST YOU:



Front row left to right
Stella Patton, Elaine Womack, Kim Gordon, and Betty Dawson

Back row left to right
Renee Reed, Teresa Compton, Kristi Kilpatrick, Jim Wood (Not Pictured: Ann Cauthen, Dianne Jones,
Tammy Bargainer, Debra Bradley, & Nicole Lovvorn)

**Butler County Health Department
350 Airport Road
Greenville, Alabama 36037**

CONTACT US AT (251)578-1952



Women, Infants and Children (WIC) is a supplemental nutrition program for pregnant women, breastfeeding women, women who had a baby within the last six months, infants, and children under the age of five. One must meet income requirements and have a nutritional risk that proper nutrition could help to improve.

Do You Qualify for WIC? See us at www.adph.org to see if you meet qualifications. WIC PROGRAM information is on the left of the screen [WIC - Home](#)

Contact one of our clerks at 334-382-3154 for an appointment.

LOOK we can SEE YOU for Family Planning!



We can see you for your family planning exam every Wednesday, and 1st and 3rd Friday of the month. Also, 5 days a week for your birth control needs! Call us for an appointment today! 334-382-3154

Case Managers are here to help you!

What Does a Public Health Case Manager Do?

We focus on identifying children, families, elderly, and physically and/or intellectually disabled adults who have needs.

We provide help to assist you in new ways, and resources to meet your needs and prevent future problems.

We are experts in helping individuals and families make behavioral and situational life changes in order to improve their overall health and well-being.

We can help you with referrals to doctors, gas vouchers for medical appointments, getting needed medical equipment, and more! Call us to help you or others you know who may be eligible!

251-382-3154

Environmental News:

Home Health News:

Home Health Nurses are here and available to you!

We accept Medicare, Medicaid, Blue Cross / Blue Shield, and Private Pay!

Call us at 1-800-239-2980 for more details!

Biomonitoring:

Patients who have Patient 1st Medicaid & a diagnosis of congestive heart failure, diabetes, &/or hypertension may be eligible for biomonitoring.

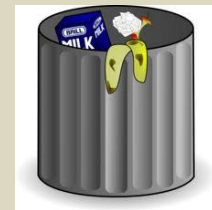
What is biomonitoring?

Biomonitoring is an in home monitoring program with the Alabama Department of Public Health and USA to help you have better overall health and compliance.



Our Environmentalist:

- Help keep your county litter free!
- Provide assistance with septic tank permitting and repairs.
- Complete food inspections of local restaurants.
- Work animal bites to ensure your health.



Contact Jim Wood with questions at:

334-382-3154

Visit our web site:



www.adph.org/butler

For Questions or appointments call: 334-382-3154