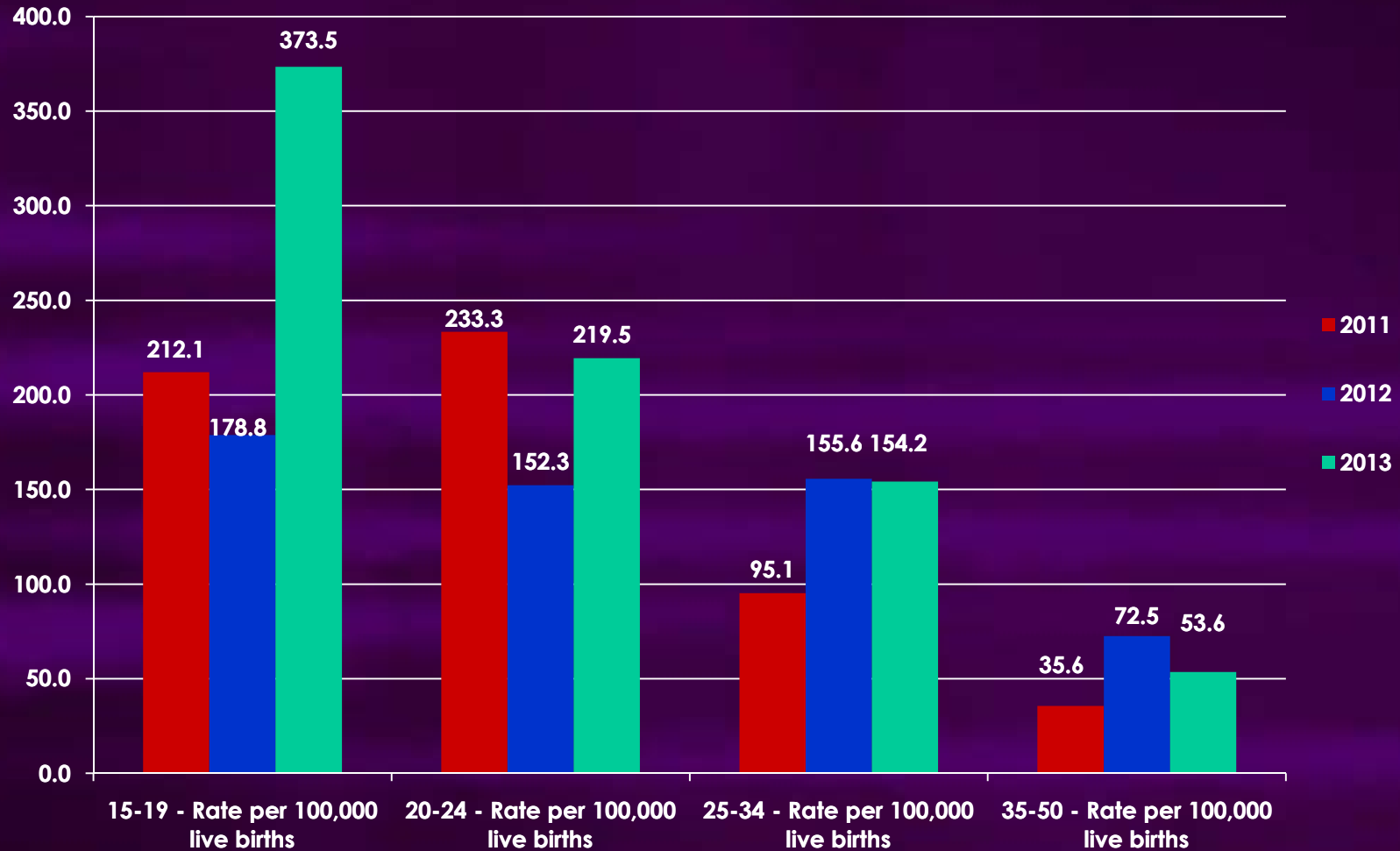


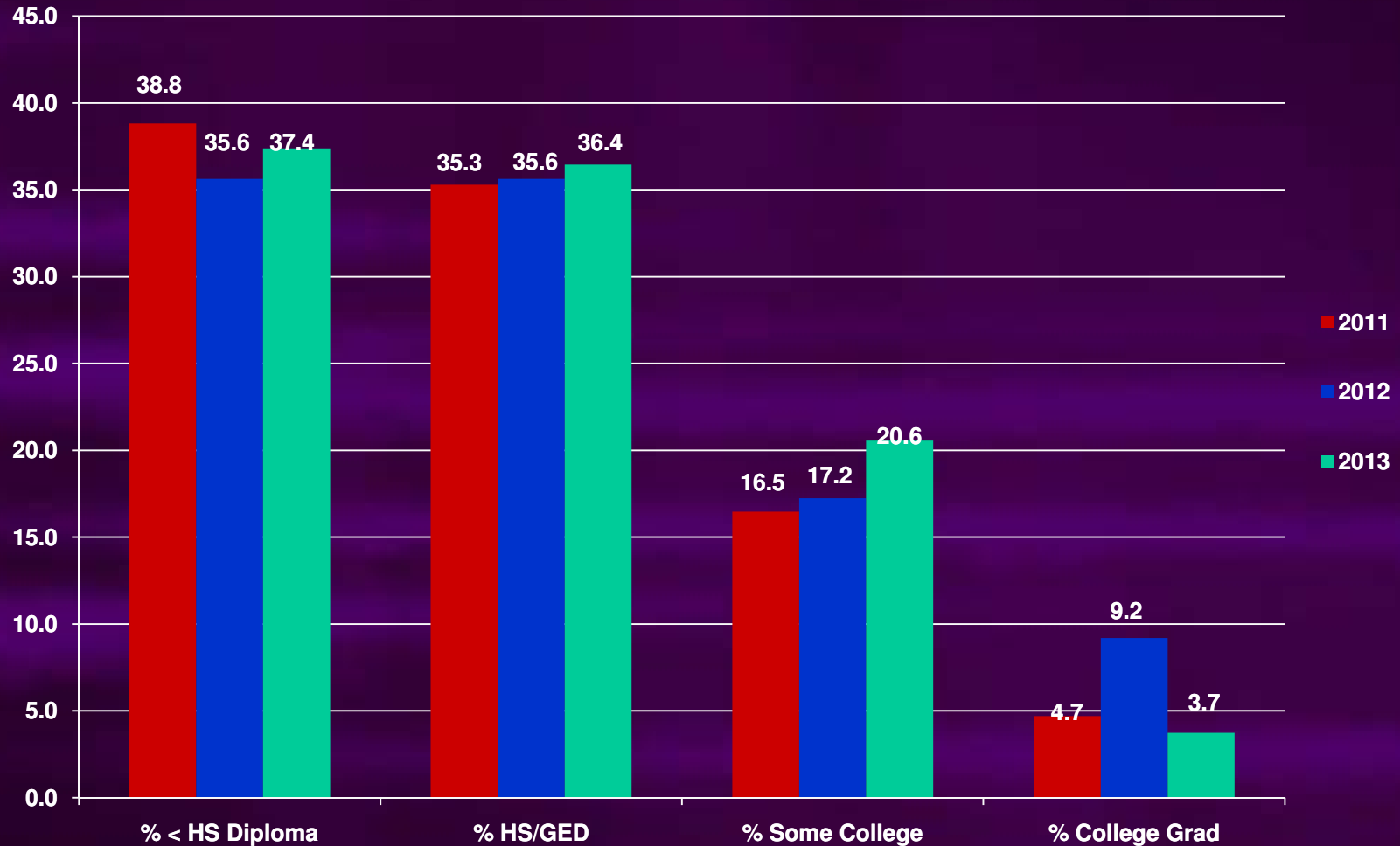
Rate of Sleep - Related Infant Deaths By Maternal Age



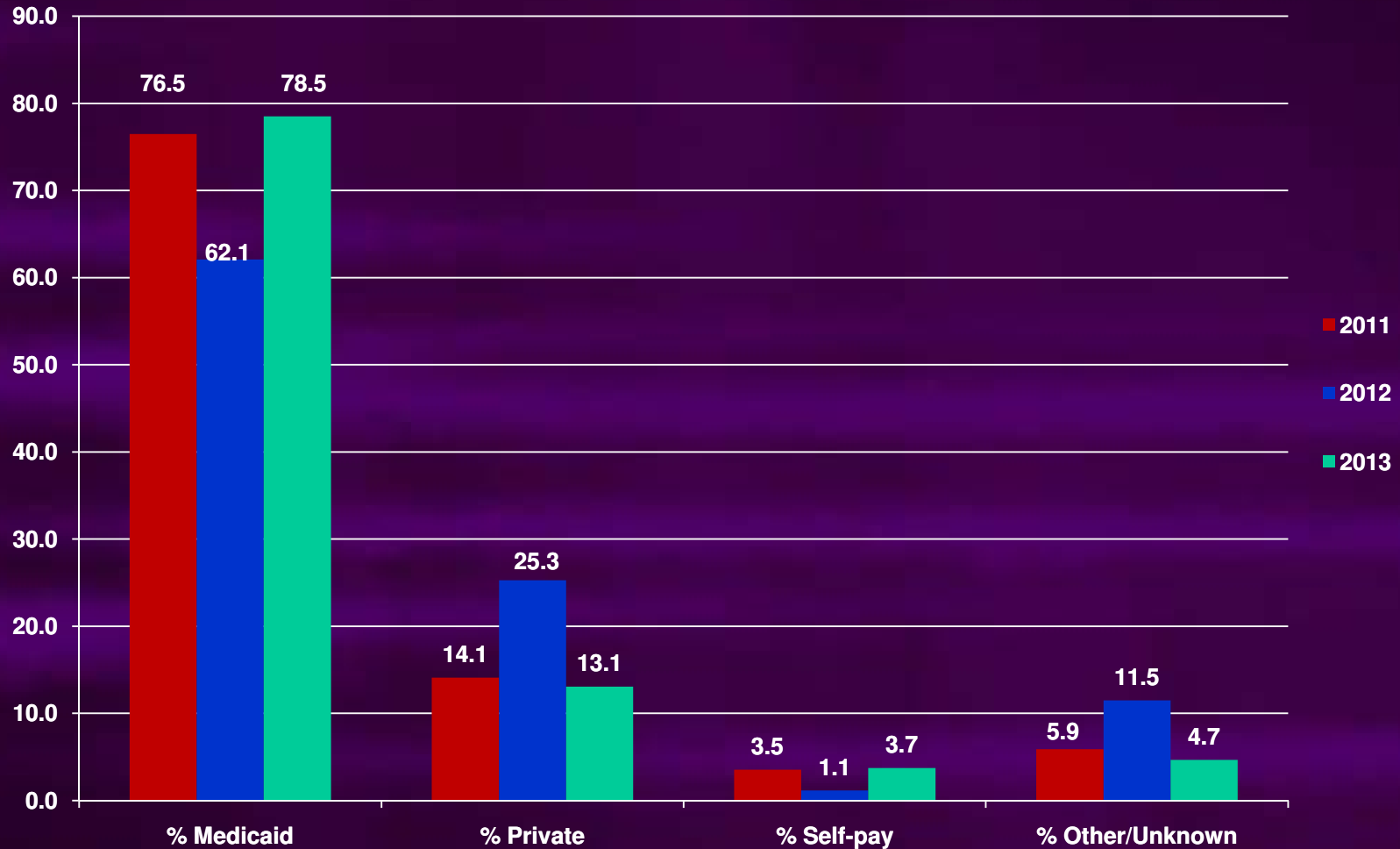
Rate of Sleep - Related Infant Deaths By Race



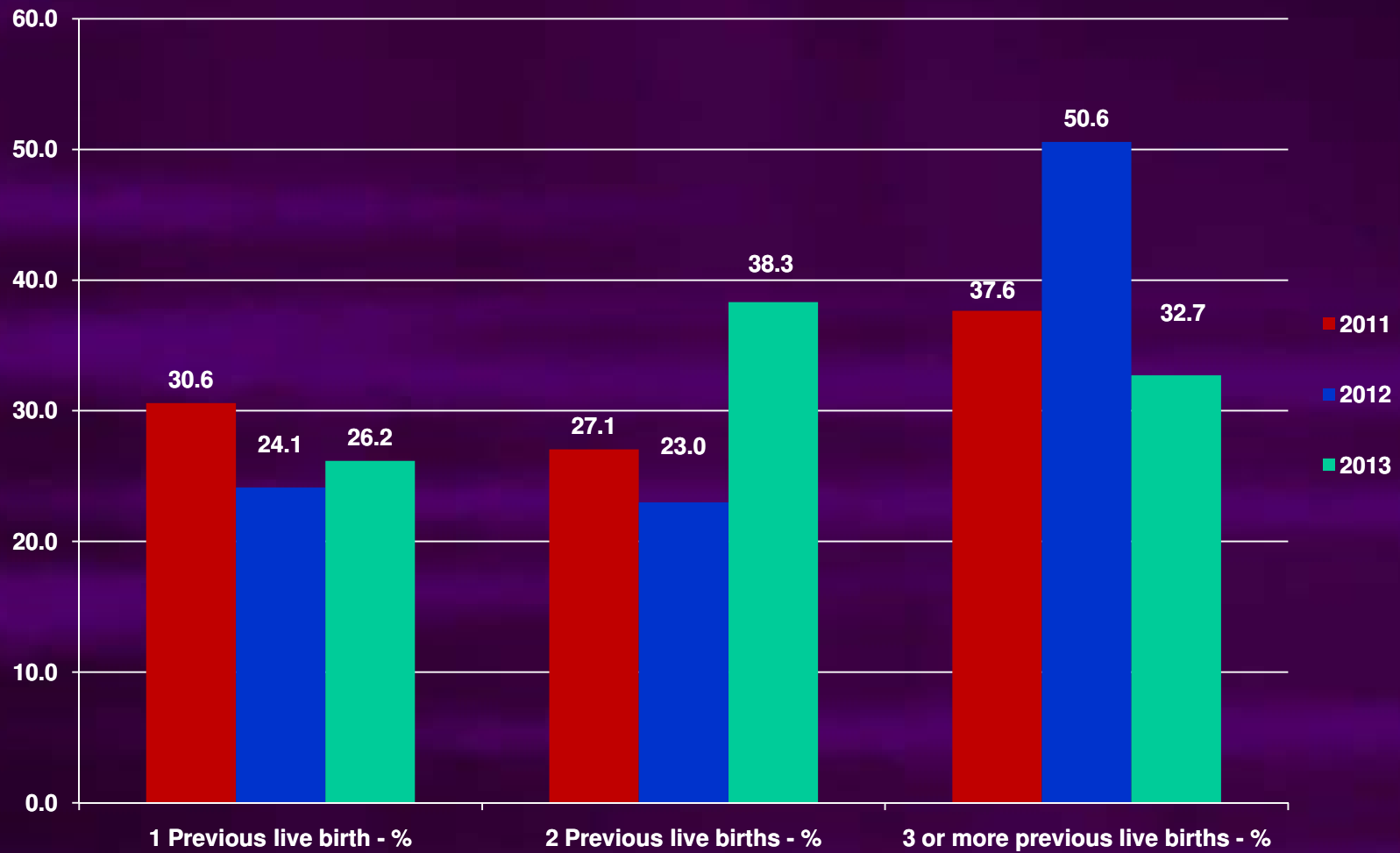
Percent of Sleep - Related Deaths By Maternal Education



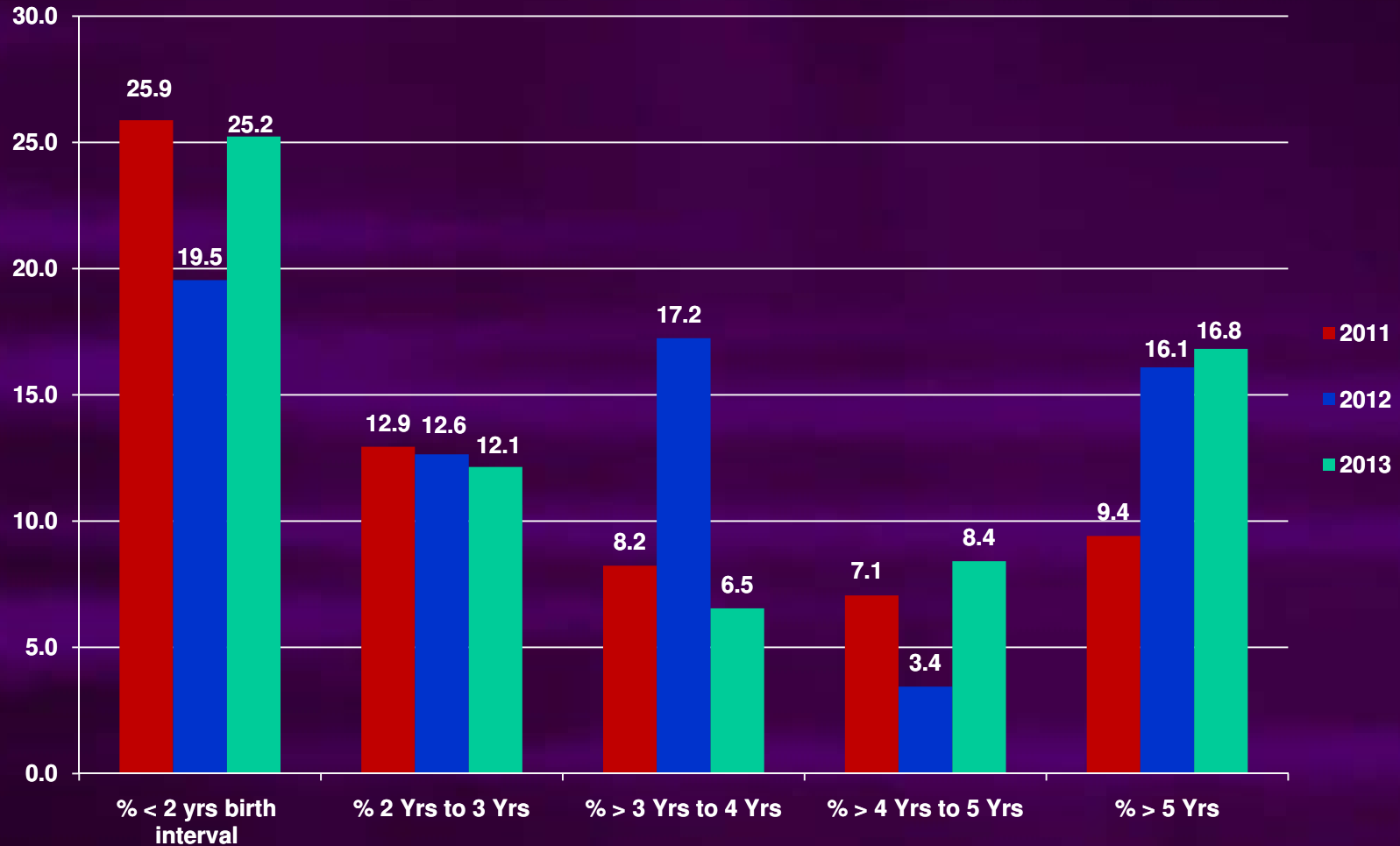
Percent of Sleep - Related Infant Deaths By Method of Payment



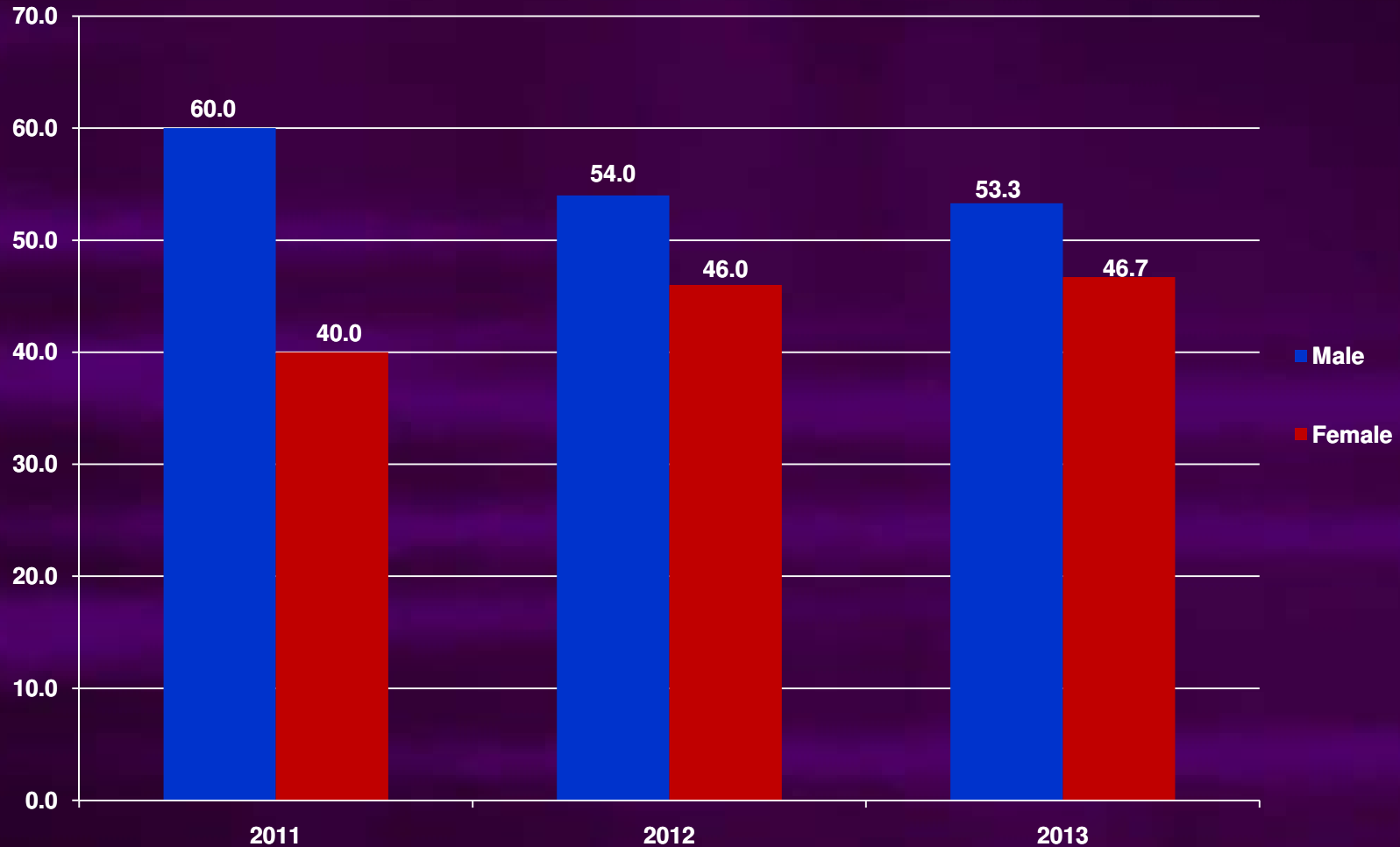
Percent of Sleep - Related Infant Deaths By Number of Previous Live Births



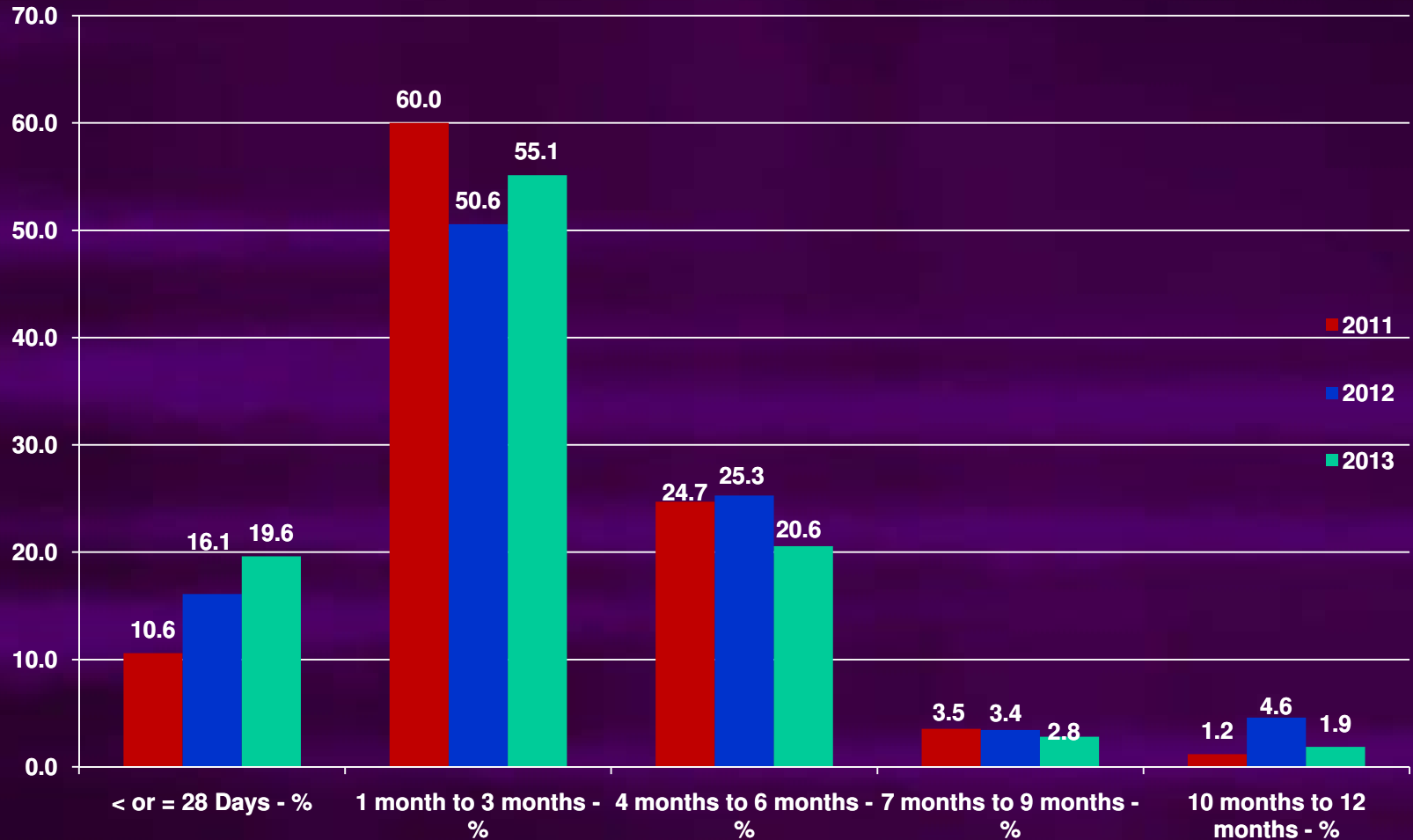
Percent of Sleep - Related Infant Deaths By Birth Intervals



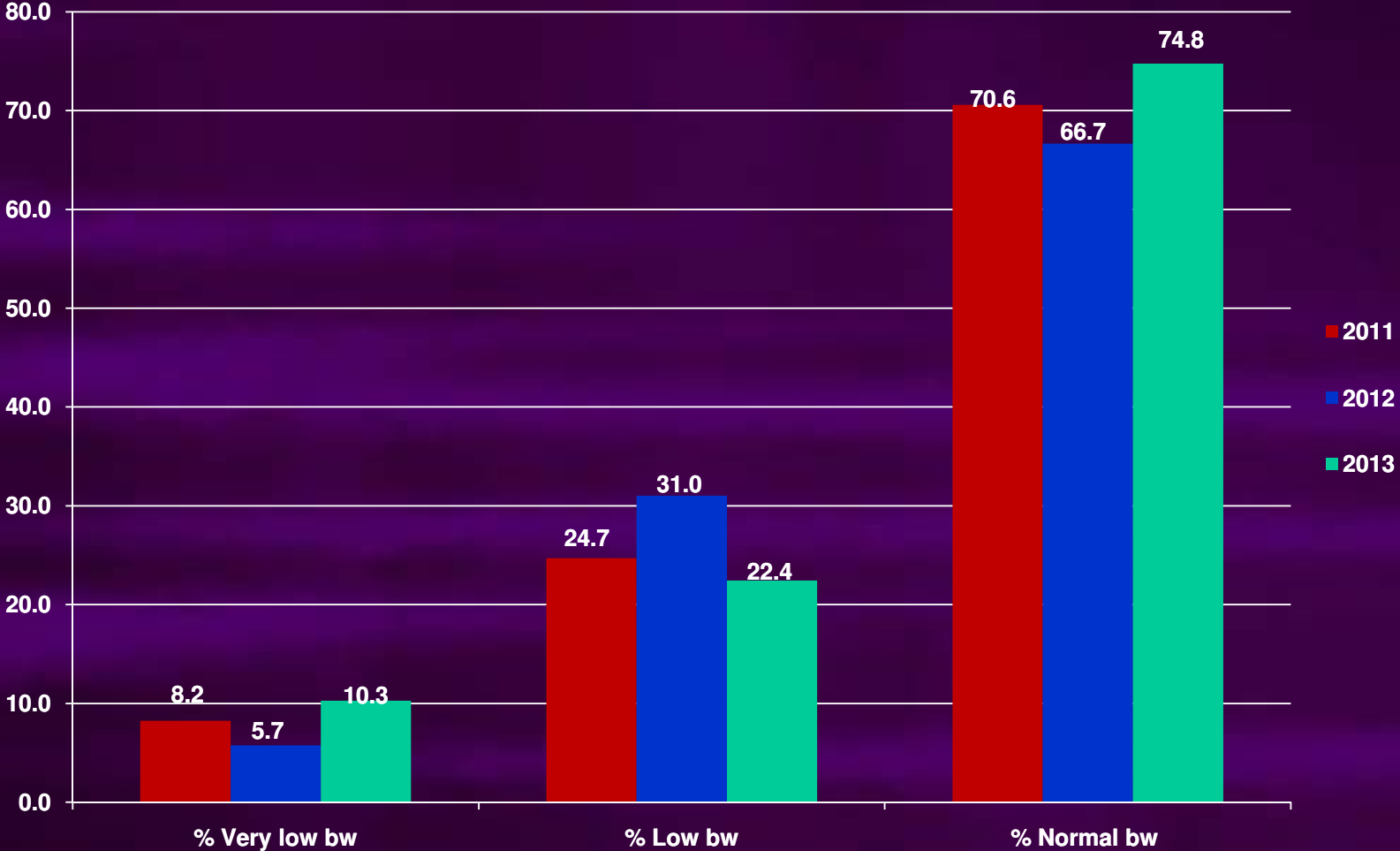
Percent of Sleep - Related Infant Deaths By Sex



Percent of Sleep - Related Infant Deaths By Age



Percent of Sleep - Related Infant Deaths By Birth Weight



Percent of Sleep – Related Infant Deaths By Gestational Age

