

## Alabama Department of Public Health Center for Emergency Preparedness Overview

## Faculty

Tim Hatch, MPA, REHS  
Environmental Program Director  
Center for Emergency Preparedness  
Alabama Department of Public Health

## Sheltering

1. Mass Care Shelters
2. Comfort Care Shelters
3. Medical Needs Shelters
4. Alternative Care Sites
5. Hospitals

## Medical Needs Shelters



- 17 Shelters
- 1, 725 Patients
- 3,450 Total MNS Population

## Shelter Kits

- Nursing
- Clerical
- Social Work
- Environmental

## Teams

Medical Needs Shelter	48
Medical Station Set-up	15
Administrative Response	7

### Assets



### Our Work Horses



- Four each assigned; Ford F350 Diesel
- Used to tow all trailers

### Mobile Medical Stations



- 7 Stations with 3 trailers per Station
  - 4 at Smothers Road Warehouse
  - 1 in Mobile Co.
  - 1 in Jefferson Co.
  - 1 in Madison Co.

### Medical Station



- Contents in trailers

### Medical Station



- Contents in trailers

### Mobile Medical Stations

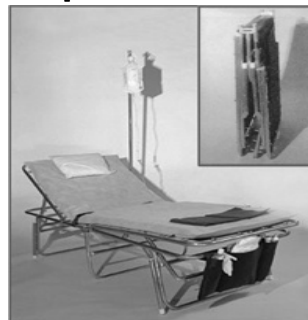


### Cot Trailers



- 6 Cot trailers

### Patient Cots with Disposable Linens



### Pharmacy Trailer



### Water Purification Units



Responder  
60 gal/hr



Recycler  
2400 gal/hr



Outpost  
720 gal/hr

### Water Purification Unit



### Overview

- Rapidly Deployable
- On-Site Multiple Interoperable Communications
- Satellite Connectivity with Video Streaming
- Internet Access
- On-board PTO Driven Generator

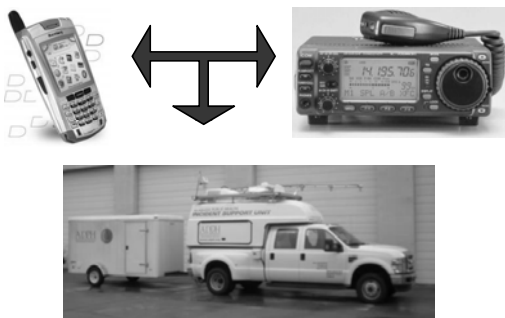
### The Truck



### Deployment

- Centrally located in state
- One person operation
- Setup time to be fully operational - 20 minutes

### Interoperable Communications



### Radio Rack



### Audio/Visual Rack



### A/V Control Panel



### Satellite Features

- **Satellite antennae**
  - GPS Activated Satellite Finder
- **Web Video Streaming**
  - Quad channel stream-Internal Camera, External Camera, DirecTV, 4<sup>th</sup> port open
- **DirecTV Access**

### Internet Features

- **Wi-Fi Internet hot spot**
  - Fixed and remote range extender
- **Wireless-G Router for mobile Internet access**
- **Internet access via Wi-Fi or wired**
- **Voice Over Internet Protocol**

### Additional Features

- **Closed circuit camera**
  - External and internal
- **Three on board monitor screens**
- **Fax/Printer/Copier/Scanner all-in-one**
- **External patch panel**

### Patch Panel



### Computer System

- **Two laptop computers**
- **Station for additional laptop**
- **Wide Area System**
  - Drop and click connectivity to truck channels as well as to other state trucks that are in network system—EMA

### Power Options

- **Onboard power generator**
  - PTO driven Exhaust Diverter
- **External Generator**
- **Shore Power**
  - Standard 110 volt AC

### Fatality Management



### Refrigerated Trailer



- Will accommodate 25 decedents in stainless steel trays

### Bus Conversion Kits



### Fifth Wheel Camper/Office



### Satellite Truck



### Satellite Truck

- Mobile satellite uplink
- Live and On Demand webcasting
- Off-site conference support
- In-studio and on location filming
- News conferences and Video News Releases
- TV public service announcements

### Motor Home Unit



### Generator 100kw 8 Each



### Utility Trailers and Small Generators



24 Utility Trailer at PHA's sites



Portable Generator Trailer



EP Small Generators

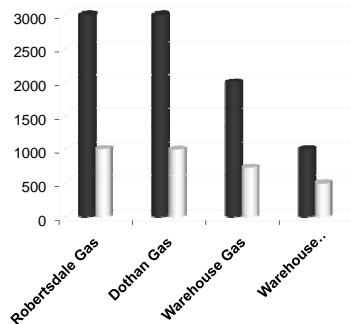


Portable Fuel Trailer/4 each:  
6 Tanks 5 diesel, one gas

### Fuel Tanks



■ Capacity  
□ Current Level



### Tools



### Be Personally Prepared

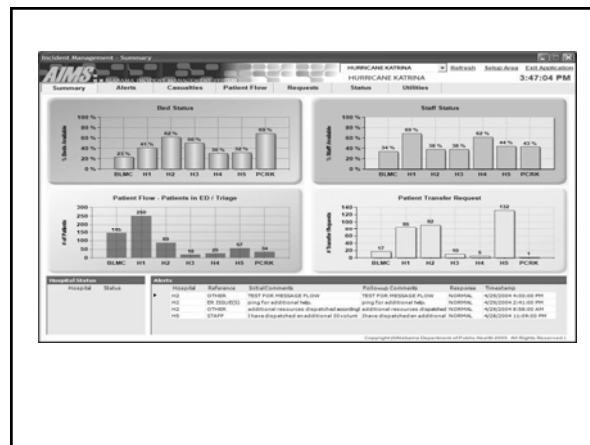
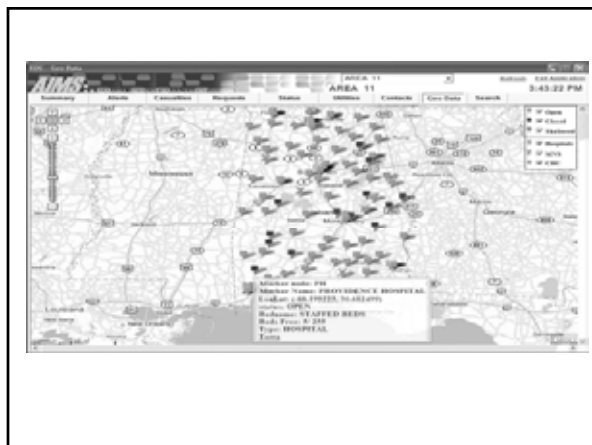
get10

## Have These Things Stockpiled

1. Water
2. Food
3. Manual Can Opener
4. Medications
5. First Aid Kit
6. Flashlight
7. Radio
8. Clothes
9. Personal Care Items
10. Important Documents

## AIMS

- Tracks bed availability in hospitals, nursing homes, medical needs shelters and other locations as well as capacity within the EMS system
- Tracks resources at facilities including staff and supplies
- Allows for immediate requests for assistance or offers of assistance

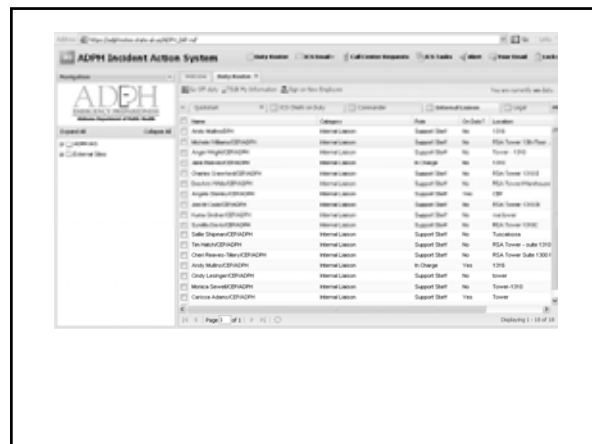


## Volunteer Teams

- Medical Reserve Corps
- Medical Needs Shelter Teams
- Administrative Response Teams
- Hospital Response Teams







**Contact**

**Alabama Department of Public Health  
Center for Emergency Preparedness**

**334-206-3394**

**www.adph.org/cep**

**Questions**