



1

---

---

---

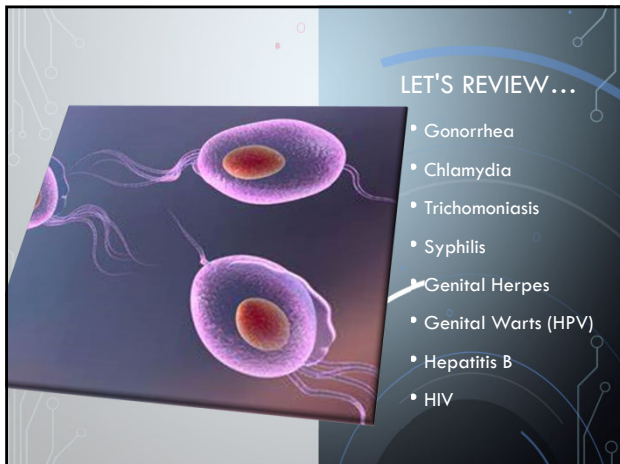
---

---

---

---

---



2

---

---

---

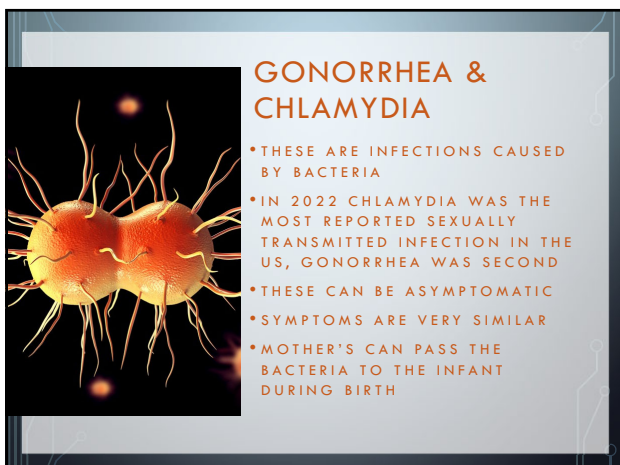
---

---

---

---

---



3

---

---

---

---

---

---

---

---

**SIGNS & SYMPTOMS**

**MEN:** PAINFUL URINATION  
PENILE DISCHARGE  
TESTICULAR PAIN

**WOMEN:** VAGINAL DISCHARGE  
PAINFUL URINATION  
BLEEDING B/T PERIODS  
LOWER ABD PAIN  
PAINFUL INTERCOURSE

75% OF PATIENTS WITH CHLAMYDIA HAVE NO SYMPTOMS

50% OF PATIENTS WITH GONORRHEA HAVE NO SYMPTOMS

**Chlamydia Life Cycle**

0-4 hrs: Attachment and entry into cell

6-12 hrs: Transition of EB to RB

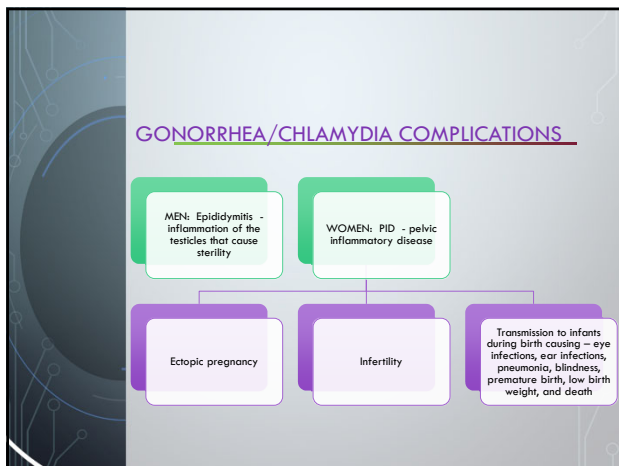
12-24 hrs: Replication

24-36 hrs: RBs reorganize back to EBs

36-48 hrs: Lysis of host cell

48-72 hrs: Lysis of host cell

4




5

**TRICHOMONIASIS**

- It is a common STI caused by a parasite
- Men may not have symptoms for years, if at all
- Women tend to have vaginal itching, foul-smelling discharge, and painful urination
- Can be treated with antibiotics
- Partners should be treated even if asymptomatic

6



### SYPHILIS - WHAT IS IT?

- Syphilis is caused by a bacteria
- It is spread by skin-to-skin contact with an infected person
- The disease is divided into 4 stages:
  - Primary
  - Secondary
  - Latent
  - Tertiary

7

---

---

---

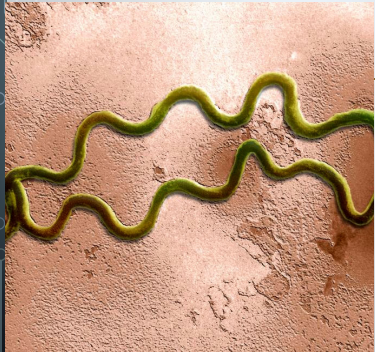
---

---

---

---

---



### PRIMARY SYPHILIS...

- Usually marked by the presence of a single lesion known as a chancre, but can have multiple lesions
- The chancre is usually painless and can last 3-6 weeks
- If not treated, syphilis will progress to secondary stage

8

---

---

---


---

---

---

---

---



### SECONDARY SYPHILIS ...

- Non-itchy rash appears on palms of hands and soles of feet. The rash can appear on the entire body.
- Appears 2 -10 weeks after the chancre has resolved.
- The rash usually resolves without treatment
- Other symptoms that may occur along with rash: Fever, swollen lymph nodes, sore throat, headaches, patchy hair loss, weight loss, muscle aches, and fatigue.
- Untreated will advance to the next stage.

9

---

---

---

---

---

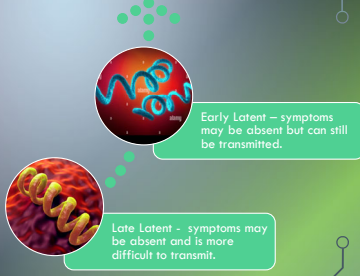
---

---

---

### LATENT STAGE...

- Begin when the secondary stage is over.
- Latent can last for 20 – 30 years.



Early Latent – symptoms may be absent but can still be transmitted.

Late Latent – symptoms may be absent and is more difficult to transmit.

10

---

---

---

---


---

---

---

---

### TERTIARY SYPHILIS...



- Tertiary Syphilis is the most serious form of the disease.
- Only approx. 15% of affected patients progress to this stage.
- In the Tertiary Stage, the syphilis bacteria will attack and damage the heart, eyes, brain, nervous system, bones, joints, or other organ systems.
- Resulting outcomes range from mental illness to heart disease and death.
- This final stage leading to death can develop years after initial infection.

11

---

---

---

---

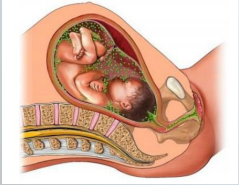
---

---

---

---

### SYPHILIS AND PREGNANCY...



- Syphilis can cause miscarriage, stillbirth, premature births, and death of the newborn.
- Some infants show symptoms at birth, others will develop visible symptoms later, but all untreated infants can develop deformities, developmental delays, seizures, enlarged organs, etc.
- Open sores on infants are contagious.

12

---

---

---

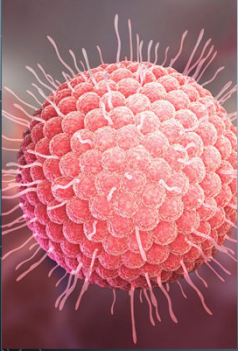
---

---

---

---

---



### GENITAL HERPES...

- Herpes is caused by Herpes Simplex Virus (HSV)
- HSV is broken down into HSV 1 and HSV 2
- HSV 1 - cold sores/fever blisters
- HSV 2 - sores in the genital region
- Both types can cause sores in either location
- Can be spread even if no sores are present

13

---

---

---

---

---

---

---

---

### HSV SIGNS AND SYMPTOMS

- Minor itching rash in the genital region.
- Painful, inflamed blisters develop.
- First outbreak can be more severe than repeated outbreaks to include fever, body aches, swollen lymph nodes, painful urination, and vaginal discharge.
- Warning sign or prodrome (tingling) at the site is experienced by 50% of affected people.
- Emotional stress can often be a factor.

14

---

---

---

---

---


---

---

---

### GENITAL HERPES - COMPLICATIONS

Transmitted to infant during the birthing process



Resulting in mental retardation, loss of vision, and death

15

---

---

---


---

---

---

---

---



### GENITAL WARTS...

- Are a viral infection caused by HPV
- Is spread from infected skin contact, whether warts are visible or not
- Not everyone infected will have visible warts
- When present, the warts appear in a painless cauliflower-like cluster in the genital/anal region

16

---

---

---

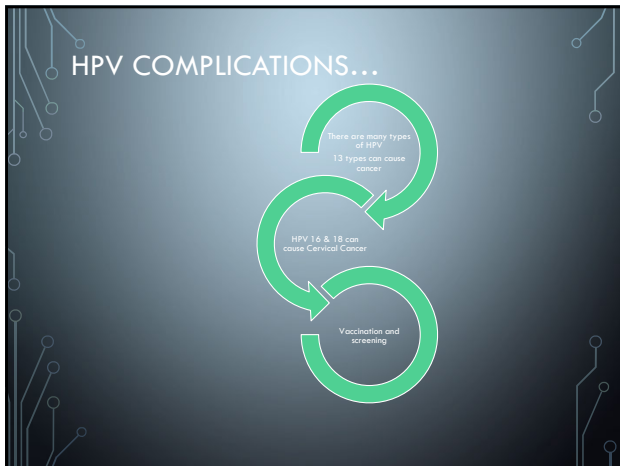
---

---

---

---

---



17

---

---

---

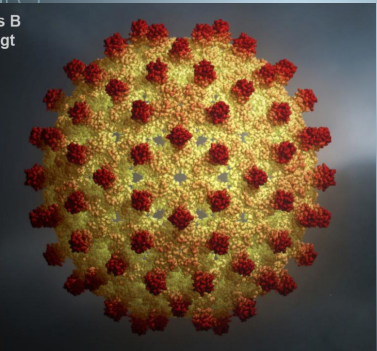
---

---

---

---

---



### HEPATITIS B

- Hepatitis B is a viral illness that attacks the liver and can lead to cirrhosis, cancer, and death.
- Hepatitis B is spread from the blood of an infected person.
- Hepatitis B Vaccine is available to all ages to prevent infection.

18

---

---

---

---

---

---

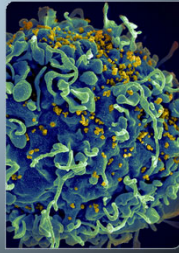
---

---



## HIV FACTS...

- HIV is a virus that attacks the immune system, allowing opportunistic diseases to thrive and eventually kill the host.
- Once a person is infected – there is no cure, BUT there is now a treatment that allows the virus to diminish to undetectable.



19

---

---

---

---

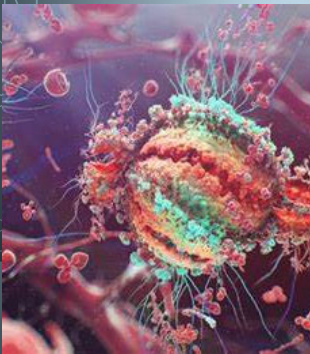
---

---

---

## HIV FACTS...

- Is spread through contact with infected blood, semen, vaginal fluid, and breast milk.
- The only way to know... is to get tested.
- Prevention is the key...



20

---

---

---

---

---

---

---

## HIV MANAGEMENT

- ADPH currently has a program prescribing PrEP
- For Prevention and Management of current infections



21

---

---

---

---

---

---

---