

2024 BALDWIN COUNTY HEALTH DEPARTMENT



Provides caring, quality services that affect every person in Baldwin County—not just those who walk through health department doors.



The Bureau of Clinical Laboratories provides quality laboratory results for the following programs: maternity, family planning, child health, STD, tuberculosis control, diabetes, HIV/AIDS, newborn screening and environmental services.



Alabama's Children's Health Insurance Program increases access to care for eligible, uninsured children ages birth through 18, and served 9,005 Baldwin County children in the month of October 2024.



Provided 2,548 immunizations including childhood and adult vaccines. Provided Alabama Certificates of Immunization required for school entry.



Licensed public health social workers provide case management/care coordination for newborn screening disorders, elevated lead levels, home health and other services.



Provides health education and other services to modify behavior to prevent and manage chronic diseases and prevent injuries.



Prevents the occurrence and spread of rabies within the human and animal population of Baldwin County by investigating reports of 524 exposures to animal bites.



Provided confidential testing, treatment, counseling, partner referral, and epidemiologic investigations for most sexually transmitted diseases in 536 support nurse visits.



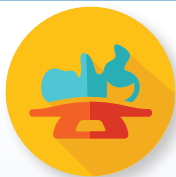
Provided 54 visits for tuberculosis testing, medication, physician services, epidemiologic investigations, hospitalization, and laboratory services for those with known or suspected TB disease and their contacts.



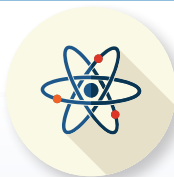
Offers a tobacco Quitline free to Alabama residents. Free call, free coaching, and free nicotine patches (if medically eligible and in coaching) to help tobacco users quit. Call 1-800-QUIT NOW or go to Quitnowalabama.com



Provided breast and cervical cancer screening to 102 uninsured women age 40-64.



Newborn screening detects genetic or metabolic conditions, thereby reducing morbidity, premature death, intellectual and other developmental disability through early detection and follow-up.



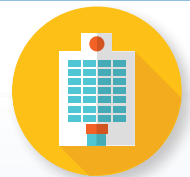
Regulates the possession, use and disposal of radioactive materials and equipment, and administers a radon and naturally occurring radioactive materials program.



Responds to storms, floods, disease outbreaks, nuclear power plant accidents, and other emergencies. Employees provide training, coordination, and response to disasters and partner with local first responders for health, medical, and social services.



Assists rural and medically underserved areas by working with health care providers and organizations to prepare grants and provide workforce development.



Protects patients/residents of health care facilities from abuse and neglect. Works to ensure facilities comply with state and federal standards. Requires corrective action when surveys find facilities are noncompliant. Assures that emergency medical services meet or exceed established standards.

2024 ANNUAL REPORT OF THE BALDWIN COUNTY HEALTH DEPARTMENT



Conducted 1,839 site visits to issue new/repair permits to regulate and permit sewage disposal systems and oversee treatment and disposal of septage and other wastes. **Conducted 5,004 inspections** of public swimming pools and spas.



Issued 32,430 certified copies of certificates on a while-you-wait basis regardless of where in the state the event occurred.



Conducted 5,547 inspections of restaurants, schools, body art, and other food service and lodging establishments including child care centers to ensure standards in environmental health are maintained.



Confidential and professional family planning services were provided in 1,612. A wide range of services is available regardless of income to prevent unintended pregnancies through education and contraceptive services.



WIC provides nutrition assessment, education, and nutritious foods at no cost to a monthly average of 3,934 limited-income pregnant, breastfeeding, and postpartum women, infants, and children up to age 5 at nutritional risk in Baldwin County.

The Alabama Department of Public Health (ADPH) works closely with your community to protect the public's health through emergency preparedness activities, health care coalitions, training, and response.

The mission of the ADPH is to promote, protect, and improve the health of individuals and communities in Alabama, and has served Baldwin County since 1921. Our purpose is to provide caring, high quality, and professional services for the

improvement and protection of the public's health through disease prevention and the assurance of public health services to resident and transient populations of the state regardless of social circumstances or the ability to pay.

All services from the ADPH are provided to eligible persons without regard to race, color, creed, national origin, political beliefs, handicaps, or sex. Payment for services varies. No one will be denied services if unable to pay.



Environmental and Vital Statistics 22251 Palmer Street

P.O. Box 369

Robertsdale, Alabama 36567

Phone: (251) 947-3618

Health Clinic

23280 Gilbert Drive

Robertsdale, Alabama 36567

Phone: (251) 947-1910

Environmental and Health Clinic

212 Courthouse Square

Bay Minette, Alabama 36507

Phone: (251) 937-6935

WIC Clinic (Bay Minette Location)

212 Courthouse Square

Bay Minette, Alabama 36507

Phone: (251) 937-6935

WIC Clinic (South Baldwin Location)

8158 Highway 59 Unit 108

Foley, Alabama 36535

Phone: (251) 943-7260

WIC Clinic (Robertsdale Location)

23280 Gilbert Drive

Robertsdale, Alabama 36567

Phone: (251) 946-8040

Hours of Operation: 7:30 a.m.-5 p.m.

