



## Alabama EMSP Programs

- Alabama Fire College
- Bevill State Community College
- Calhoun Community College
- Chattahoochee Valley Community College
- Coastal Alabama Community College
- Enterprise-Ozark State Community College\*
- Fortis College\*
- Gadsden State Community College-McClellan Center
- Gadsden State Community College
- Herzing University
- Jefferson State Community College
- Lawson State Community College\*
- Lurleen B. Wallace Community College
- Northeast Alabama Community College
- Southern Union Community College
- H. Council Trenholm State Technical College
- University of South Alabama
- The University of West Alabama\*
- Wallace Community College
- Wallace State Community College

\*Not accredited by Committee on Accreditation of Education Programs for the Emergency Medical Services Professions at this time. If additional contact information is needed, please visit [www.alabamapublichealth.gov/ems](http://www.alabamapublichealth.gov/ems). Last Updated: January 13, 2020.

Alabama Trauma Communications Center  
 Toll-free emergency: 1.800.359.0123 or  
 Southern LINC EMS Fleet 55: Talkgroup 10  
 Or Private 55\*380 or Nextel 154\*132431\*4

## Office of EMS Staff

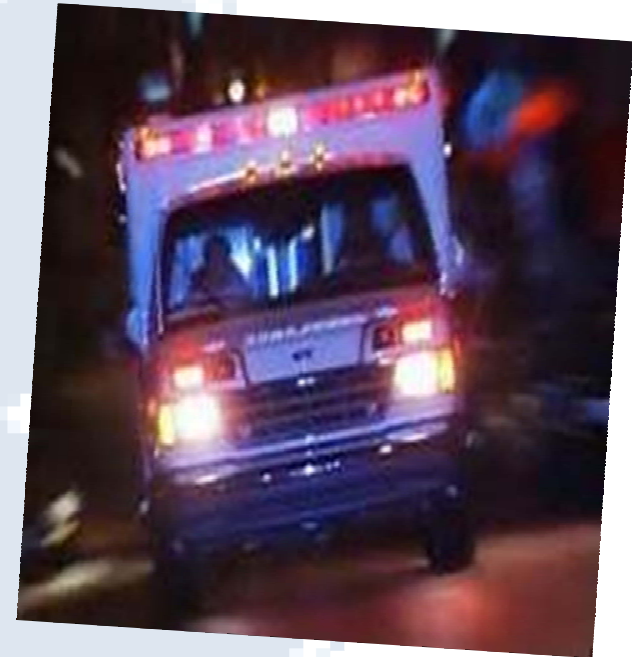
- Stephen Wilson, BS, NRP**  
State EMS Director
- Stephanie Payne, BS**  
Director's Assistant and Office Manager
- Jamie Gray, BS, AAS, NRP**  
Deputy Director
- William Crawford, M.D., NRP, FACEP**  
State EMS Medical Director
- Shea Duerring, M.D., NRP, FAAP, FACEP**  
Assistant State EMS Medical Director for Pediatrics
- Jeff Kerby, M.D., PhD, FACS**  
State Trauma Consultant
- Augustine Amenyah, Ed.D, MPH**  
Epidemiologist
- Beverly Edwards, AAS, NRP**  
Compliance Specialist
- Alice Floyd, BSN, RN**  
Acute Health System Manager
- Katherine Dixon Hert, BS**  
EMS for Children Project Director
- Christopher Hutto, MBA, NRP**  
Education Coordinator/Regional Liaison
- Lori McInerney**  
Information Technology Support
- Chris Palmer**  
Information Technology Support
- Bill Petrey, AAS, NRP**  
Compliance Specialist
- Steven Stringer, BS, NRP**  
Stroke System Coordinator
- Vickie Turner, BS, NRP**  
Licensure Coordinator
- Gary Varner, MPH, NRP**  
Senior Epidemiologist
- Kent Wilson, BS, NRP**  
Cardiac System Coordinator

**201 Monroe Street, RSA Tower, Suite 1100  
 Montgomery, AL 36104**



Alabama Department of Public Health

## Some commonly asked questions



## About the Office of EMS



## Mission of Alabama Office of EMS

The Office of EMS (OEMS) is responsible for protecting the health, safety, and welfare of the public by assuring that emergency medical services provided by ambulance services, emergency medical response agencies, training entities, and emergency medical services personnel meet or exceed established standards.

## EMS DEFINITIONS

- **EMSP**- Licensed Emergency Medical Services Personnel who are authorized to perform procedures and administer medications as defined by Alabama State Protocols.
- **EMR**- Emergency Medical Responders have an option to be licensed but are no longer required to be in the State of Alabama. See [www.NREMT.org](http://www.NREMT.org) for training requirements.
- **EMT**- Emergency Medical Technicians are licensed by the Alabama Department of Public Health Office of EMS (ADPH-OEMS) to perform patient care procedures and to administer medications in accordance with EMT Protocols.
- **AEMT**- Advanced Emergency Medical Technicians are licensed by the ADPH-OEMS to perform all patient care procedures and administer all medications as defined in the EMT Scope of Practice AND in accordance with AEMT Protocols.
- **Intermediate**- Intermediates are licensed by the ADPH-OEMS to perform all patient care procedures and administer all medications as defined in the EMT and the Advanced EMT Scope of Practice AND in accordance with Intermediate Protocols.
- **Paramedic**- Paramedics are licensed by the ADPH-OEMS to perform all patient care procedures and administer all medications as defined in the EMT, Advanced EMT, and Intermediate EMT Scope of Practice AND in accordance with Paramedic Protocols.

If you need a current copy of State Protocols, please visit [www.alabamapublichealth.gov/ems](http://www.alabamapublichealth.gov/ems).

## Current EMSP Statistics

EMR	78
EMT	6353
AEMT	995
Intermediate	239
Paramedic	4053
<b>Total</b>	<b>12,718</b>

## Active License Providers

Transport	211
Non-transport	96
<b>Total</b>	<b>307</b>

Last Updated: January 16, 2020

## EMS REGIONS

- **Alabama EMS Region One (AERO)**  
Regional Director: Dion Shultz  
Phone Number: 256-428-2376
- **East Alabama EMS, Inc. (EAEMS) Region Two**  
Regional Director: John E. Blue, II  
Phone Number: 205-763-8400
- **Birmingham Regional EMS System (BREMSS) Region Three**  
Regional Director: Michael Minor  
Phone Number: 205-934-2595
- **West Alabama EMS Region Four**  
Regional Director: Glenn Davis  
Phone Number: 205-348-4549
- **Southeast Alabama EMS, Inc (SEAEMS) Region Five**  
Regional Director: Denise Louthain  
Phone Number: 334-793-7789
- **Alabama Gulf EMS System (AGEMSS) Region Six**  
Regional Director: David Garmon  
Phone Number: 251-461-1832

## EMS REGIONS



Alabama Department of Public Health  
[www.alabamapublichealth.gov](http://www.alabamapublichealth.gov)