

2023 CLARKE COUNTY HEALTH DEPARTMENT

ALABAMA
PUBLIC
HEALTH

Provides caring, quality services that affect every person in Clarke County—not just those who walk through health department doors.



The Bureau of Clinical Laboratories provides quality laboratory results for the following programs: maternity, family planning, child health, STD, tuberculosis control, diabetes, HIV/AIDS, newborn screening and environmental services.



Alabama's Children's Health Insurance Program increases access to care for eligible, uninsured children ages birth through 18, and served 862 Clarke County children in October 2023.



Provided 489 immunizations including childhood and adult vaccines. Provided Alabama Certificates of Immunization required for school entry.



Licensed public health social workers provide case management/care coordination for newborn screening disorders, elevated lead levels, home health and other services.



Issued 62 new or repair permits to regulate and permit onsite sewage disposal systems and oversee treatment and disposal of septic and other permitted wastes.



Prevents the occurrence and spread of rabies within the human and animal population of Clarke County by investigating reports of 21 exposures to animal bites.



Provided confidential testing, treatment, counseling, partner referral, and epidemiologic investigations for most sexually transmitted diseases in 730 support nurse visits.



Offered tuberculosis testing, medication, physician services, epidemiologic investigations, hospitalization, and laboratory services for those with known or suspected TB disease and their contacts.



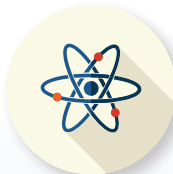
Offers a tobacco Quitline free to Alabama residents. Free call, free coaching, and free nicotine patches (if medically eligible and in coaching) to help tobacco users quit. Call 1-800-QUIT NOW or go to Quitnowalabama.com



Provided breast and cervical cancer screening to 26 uninsured and underinsured women age 40-64.



Newborn screening detects genetic or metabolic conditions, thereby reducing morbidity, premature death, intellectual and other developmental disability through early detection and follow-up.



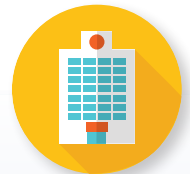
Regulates the possession, use and disposal of radioactive materials and equipment, and administers a radon and naturally occurring radioactive materials program.



Responds to storms, floods, disease outbreaks, nuclear power plant accidents, and other emergencies. Employees provide training, coordination, and response to disasters and partner with local first responders for health, medical, and social services.



Assists rural and medically underserved areas by working with health care providers and organizations to prepare grants and provide workforce development.



Protects patients/residents of health care facilities from abuse and neglect. Works to ensure facilities comply with state and federal standards. Requires corrective action when surveys find facilities are noncompliant. Assures that emergency medical services meet or exceed established standards.

2023 ANNUAL REPORT OF THE CLARKE COUNTY HEALTH DEPARTMENT



Provided 2,689 home care visits that include skilled nursing, physical therapy, medical social work and personal care services through Medicare-certified home health agencies.



Issued 5,255 certified copies of vital records on a while-you-wait basis regardless of where in the state the event occurred.



Conducted 446 inspections of restaurants, schools, and other food service and lodging establishments including child care centers to ensure standards in environmental health are maintained.



Confidential and professional family planning services were provided to Clarke County residents in 1,388 visits. A wide range of services is available regardless of income to prevent unintended pregnancies through education and contraceptive services.



WIC provides nutrition assessment, education, and nutritious foods at no cost to a monthly average of 980 limited-income pregnant, breastfeeding, and postpartum women, infants, and children up to age 5 at nutritional risk in Clarke County.

The Alabama Department of Public Health (ADPH) works closely with your community to protect the public's health through emergency preparedness activities, health care coalitions, training, and response.

The mission of the ADPH is to promote, protect, and improve the health of individuals and communities in Alabama, and has served Clarke County since 1928. Our purpose is to provide caring, high quality, and professional services for the improvement and protection of the public's health through disease prevention and the assurance of public health services to resident and transient populations of the state regardless of social circumstances or the ability to pay.

All services from the ADPH are provided to eligible persons without regard to race, color, creed, national origin, political beliefs, handicaps, or sex. Payment for services varies. No one will be denied services if unable to pay.

Clarke County Health Department
22600 Highway 84 East
Grove Hill, Alabama 36451
Office: (251) 275-3772

Hours of Operation: 7:30 a.m.-5:00 p.m., Monday through Friday.