

State of Alabama
Department of

Public Health

Fax: 334-206-5890

Web Site:
www.adph.org.facmgmt

Mike Free

Building Construction Specialist
Technical Services Unit
Office of Facilities Management

334-206-5221

334-206-5177

The RSA Tower

201 Monroe Street, Suite 1510

Montgomery, AL 36104

P.O. Box 303017

Montgomery, AL 36103-3017

E-Mail: Mike.Free@adph.state.al.us

International Building Code 2009 Edition

Changes related to Ambulatory Health Care Facilities

- IBC, Chapter 2 Definitions
- **AMBULATORY HEALTH CARE FACILITY.**
Buildings or portions thereof used to provide medical, surgical, psychiatric, nursing or similar care on a less than 24-hour basis to individuals who are rendered incapable of self-preservation.

International Building Code 2009 Edition

Changes related to Ambulatory Health Care Facilities

- **IBC, Chapter 2 Definitions**
- **AMBULATORY HEALTH CARE FACILITY.** Buildings or portions thereof used to provide medical, surgical, psychiatric, nursing or similar care on a less than 24-hour basis to individuals who are rendered incapable of self-preservation.
- **Comparison to NFPA 101, 3.3.134.1, 2000 Edition**
- **Occupancy, Ambulatory Health Care.** A building or portion thereof used to provide services or treatment simultaneously to *four or more patients* that (1) provides, on an outpatient basis, treatment for patients that renders the patients incapable of taking action for self-preservation under emergency conditions without the assistance of others; or (2) provides, on an outpatient basis, anesthesia that renders the patients incapable of taking action for self-preservation under emergency conditions without the assistance of others.

International Building Code 2009 Edition

Changes related to Ambulatory Health Care Facilities

- **IBC, SECTION 304 BUSINESS GROUP B**

304.1 Business Group B. Business Group B occupancy includes, among others, the use of a building or structure, or a portion thereof, for office, professional or service-type transactions, including storage of records and accounts. Business occupancies shall include, but not be limited to, the following:

Ambulatory health care facilities

- Clinic-outpatient
- **CLINIC, OUTPATIENT.** Buildings or portions thereof used to provide medical care on less than a 24-hour basis to individuals who are not rendered incapable of self-preservation by the services provided.

International Building Code 2009 Edition

Changes related to Ambulatory Health Care Facilities

- **IBC, SECTION 422 AMBULATORY HEALTH CARE FACILITIES**

- **422.1 General.**

- **422.2 Smoke barriers.**
 - **422.3 Refuge area**
 - **422.4 Independent egress.**
 - **422.5 Automatic sprinkler systems.**
 - **422.6 Fire alarm systems.**

International Building Code 2009 Edition
Changes related to Ambulatory Health Care Facilities

- **IBC, SECTION 422 AMBULATORY HEALTH CARE FACILITIES**

422.1 General. Occupancies classified as Group B ambulatory health care facilities shall comply with the provisions of Sections 422.1 through 422.6 and other applicable provisions of this code.

•

International Building Code 2009 Edition
Changes related to Ambulatory Health Care Facilities

- **IBC, SECTION 422 AMBULATORY HEALTH CARE FACILITIES**
- **422.2 Smoke barriers.** *Smoke barriers* shall be provided to subdivide every ambulatory care **facility greater than 10,000 square feet** into a minimum of two smoke compartments per *story*. The travel distance from any point in a smoke compartment to a *smoke barrier* door shall not exceed 200 feet. The *smoke barrier* shall be installed in accordance with Section 710.

International Building Code 2009 Edition

Changes related to Ambulatory Health Care Facilities

- **Comparison to NFPA 101, 20.3.7.2, 2000 Edition**
- **NFPA 101, 20.3.7.2**
- The ambulatory health care facility shall be divided into not less than two smoke compartments.
- **Exception No. 1: Facilities of less than 5000 square ft. and protected by an approved automatic smoke detection system.**
- *Exception No. 2: Facilities of less than 10,000 square ft. and protected throughout by an approved, supervised automatic sprinkler system installed in accordance with Section 9.7.*

International Building Code 2009 Edition
Changes related to Ambulatory Health Care Facilities

- **IBC, SECTION 422 AMBULATORY HEALTH CARE FACILITIES**
- **422.3 Refuge area.** At least 30 net square feet per **nonambulatory patient** shall be provided within the aggregate area of corridors, patient rooms, treatment rooms, lounge or dining areas and other low hazard areas on each side of each smoke barrier.

International Building Code 2009 Edition

Changes related to Ambulatory Health Care Facilities

- **422.3 Refuge area.**
- **Comparison to IBC, 407.4.1 for Group I-2 Occupancy**

407.4.1 Refuge area. At least 30 net square feet per patient shall be provided within the aggregate area of corridors, patient rooms, treatment rooms, lounge or dining areas and other low hazard areas on each side of each smoke barrier. On stories not housing patients confined to a bed or litter, at least 6 net square ft. per occupant shall be provided on each side of the smoke barrier for the total number of occupants in adjoining smoke compartments.

- **Comparison to NFPA 101, 20.3.7.5, 2000 Edition**
- **NFPA 101, 20.3.7.5**
- Not less than 15 net square ft. per ambulatory health care facility occupant shall be provided within the aggregate area of corridors, patient rooms, treatment rooms, lounges, and other low hazard areas on each side of the smoke compartment for the total number of occupants in adjoining compartments.

International Building Code 2009 Edition
Changes related to Ambulatory Health Care Facilities

- **IBC, SECTION 422 AMBULATORY HEALTH CARE FACILITIES**
- **422.4 Independent egress.** *A means of egress shall be provided from each smoke compartment created by smoke barriers without having to return through the smoke compartment from which *means of egress* originated.*

International Building Code 2009 Edition

Changes related to Ambulatory Health Care Facilities

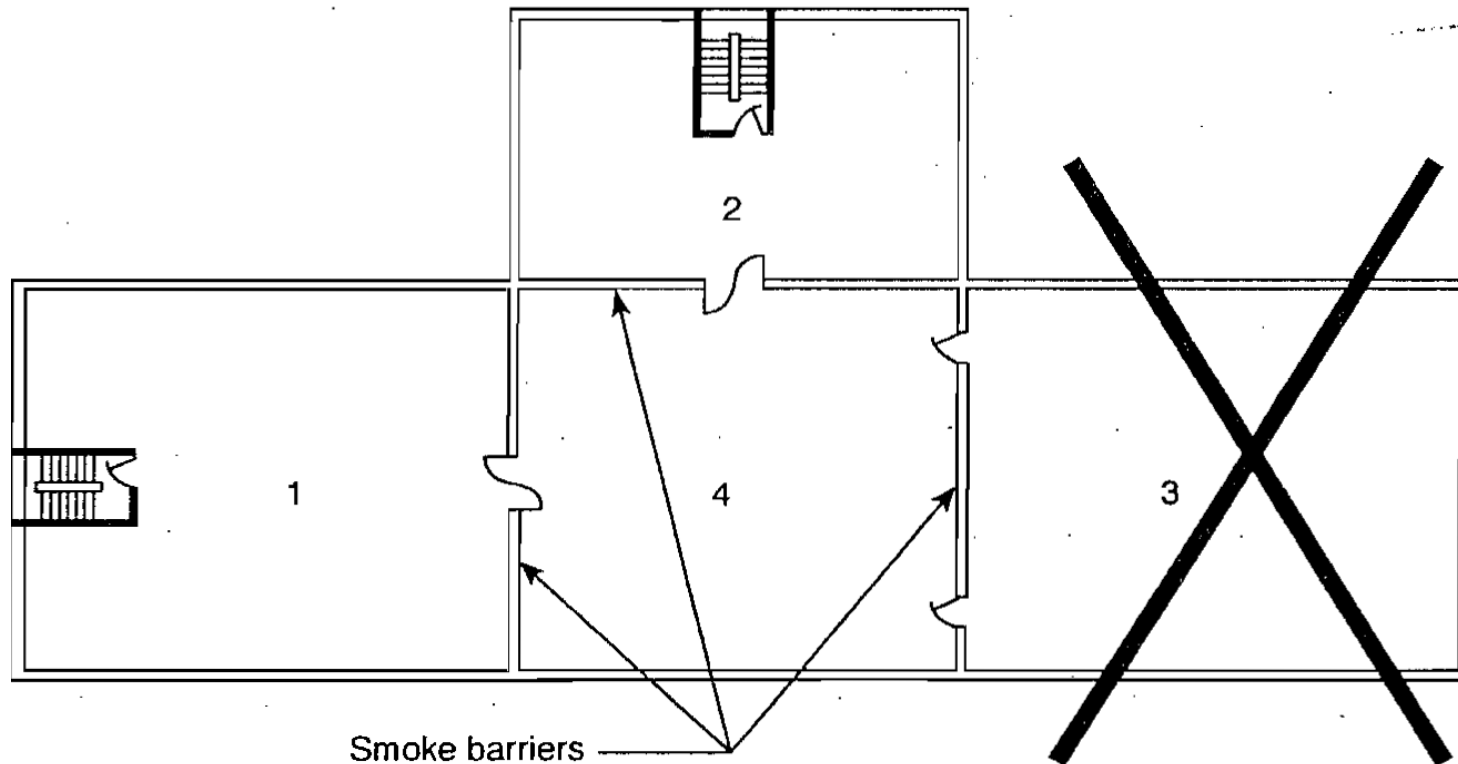
- **IBC, SECTION 422 AMBULATORY HEALTH CARE FACILITIES**
- **422.4 Independent egress.**

- **Comparison to NFPA 101, 20.2.4.3, 2000 Edition**

- **NFPA 101, 20.2.4.3**
- Not less than two exits of the types described in 38.2.2 shall be accessible from each smoke compartment. Egress shall be permitted through adjacent compartments but shall not require return through the compartment of fire origin.

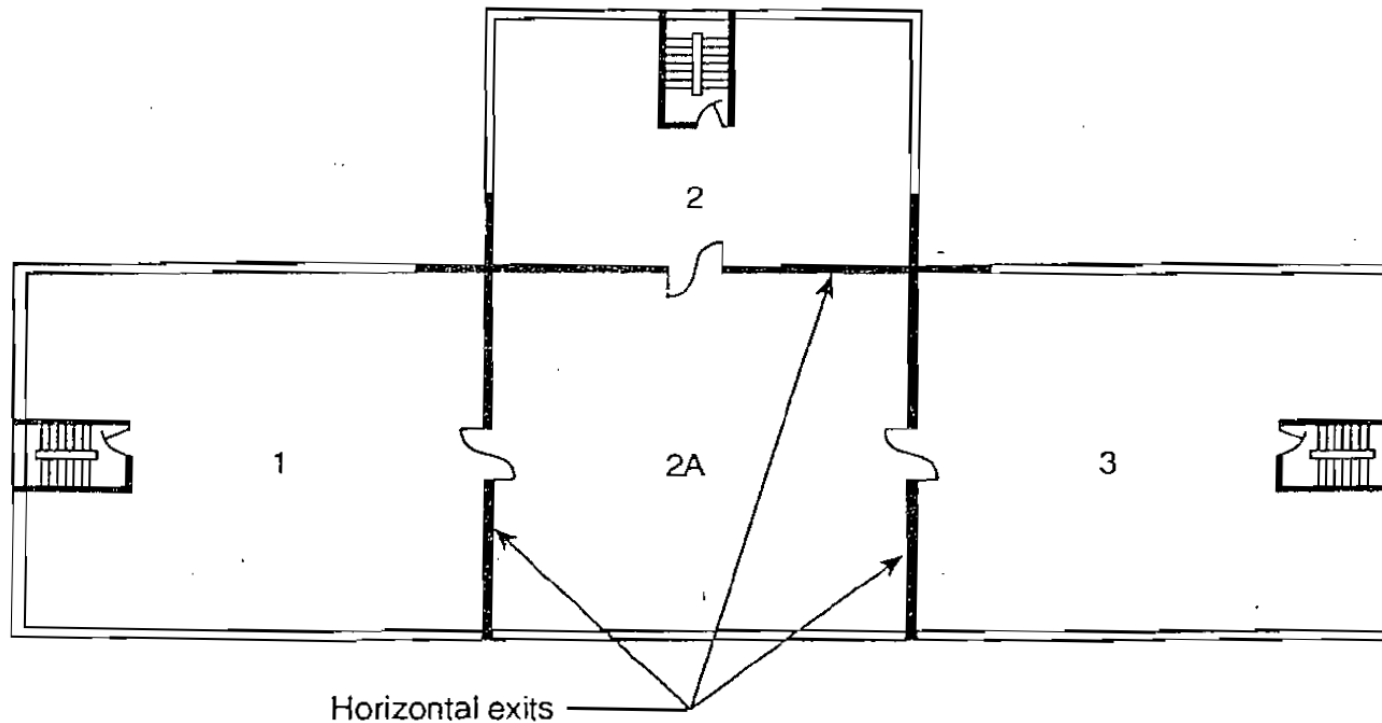
- **Comparison to IBC, 407.4.2 for a Group I-2 Occupancy**
-
- **407.4.2 Independent egress.** *A means of egress* shall be provided from each smoke compartment created by smoke barriers without having to return through the smoke compartment from which *means of egress* originated.

International Building Code 2009 Edition
Changes related to Ambulatory Health Care Facilities
422.4 Independent egress



Unacceptable arrangement of exits

International Building Code 2009 Edition
Changes related to Ambulatory Health Care Facilities
422.4 Independent egress



Two exits from each fire compartment

International Building Code 2009 Edition
Changes related to Ambulatory Health Care Facilities

- **IBC, SECTION 422 AMBULATORY HEALTH CARE FACILITIES**
- **422.5 Automatic sprinkler systems.**
Automatic sprinkler systems shall be provided for ambulatory care facilities in accordance with Section 903.2.2.

International Building Code 2009 Edition

Changes related to Ambulatory Health Care Facilities

- **IBC, SECTION 422 AMBULATORY HEALTH CARE FACILITIES**
- **903.2.2 Group B ambulatory health care facilities.** *An automatic sprinkler system shall be installed throughout all fire areas containing a Group B ambulatory health care facility occupancy* when either of the following conditions exists at any time:
 - *Four or more care recipients are incapable of self-preservation.*
 - *One or more care recipients who are incapable of self-preservation are located at other than the level of exit discharge serving such an occupancy.*

International Building Code 2009 Edition

Changes related to Ambulatory Health Care Facilities

- **IBC, Chapter 2 Definitions**
- **AMBULATORY HEALTH CARE FACILITY.** Buildings or portions thereof used to provide medical, surgical, psychiatric, nursing or similar care on a less than 24-hour basis to individuals who are rendered incapable of self-preservation.
- **Comparison to NFPA 101, 3.3.134.1, 2000 Edition**
- **Occupancy, Ambulatory Health Care.** A building or portion thereof used to provide services or treatment simultaneously *to four or more patients* that (1) provides, on an outpatient basis, treatment for patients that renders the patients incapable of taking action for self-preservation under emergency conditions without the assistance of others; or (2) provides, on an outpatient basis, anesthesia that renders the patients incapable of taking action for self-preservation under emergency conditions without the assistance of others.

International Building Code 2009 Edition

Changes related to Ambulatory Health Care Facilities

- **Fire areas/Fire Area**
- **901.7 Fire areas.** Where buildings, or portions thereof, are divided into *fire areas* so as not to exceed the limits established for requiring a *fire protection system* in accordance with this chapter, such *fire areas* shall be separated by *fire barriers* constructed in accordance with Section 707 or *horizontal assemblies* constructed in accordance with Section 712, or both, having a *fire-resistance rating* of not less than that determined in accordance with Section 707.3.9.
- **902 Definitions Fire Area.** The aggregate floor area enclosed and bounded by fire walls, fire barriers, exterior walls or horizontal assemblies of a building. Areas of the building not provided with surrounding walls shall be included in the fire area if such areas are included within the horizontal projection of the roof or floor next above.

International Building Code 2009 Edition
Changes related to Ambulatory Health Care Facilities

- **707.3.9 Fire areas.** The *fire barriers* or *horizontal assemblies*, or both, separating a **single occupancy** into **different fire areas** shall have a *fire-resistance rating* of not less than that indicated in Table 707.3.9. The *fire barriers* or *horizontal assemblies*, or both, separating **fire areas of mixed occupancies** shall have a *fire-resistance rating* of not less than the highest value indicated in Table 707.3.9 for the occupancies under consideration.

International Building Code 2009 Edition

Changes related to Ambulatory Health Care Facilities

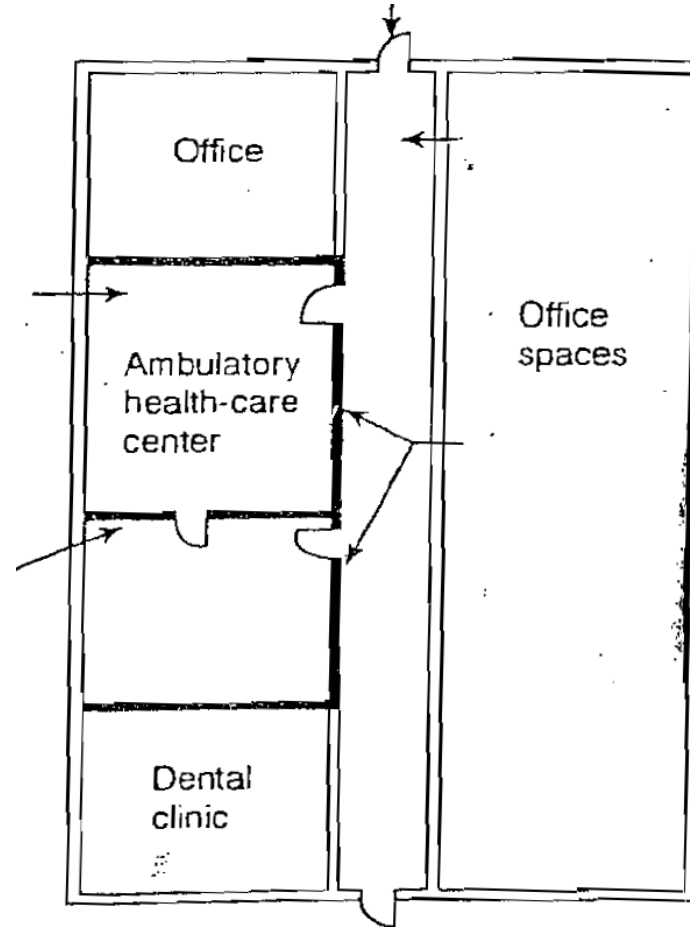
- **TABLE 707.3.9 FIRE-RESISTANCE RATING REQUIREMENTS FOR FIRE BARRIER ASSEMBLIES OR HORIZONTAL ASSEMBLIES BETWEEN FIRE AREAS**

OCCUPANCY GROUP	FIRE-RESISTANCE RATING(hours)
• H-1, H-2 :	4- Hours
• F-1, H-3, S-1:	3- Hours
• A, B, E, F-2, H-4, H-5, I, M, R, S-2:	2- Hours
• U:	1- Hour

International Building Code 2009 Edition
Changes related to Ambulatory Health Care Facilities

- **Fire Protection System.** Approved devices, equipment and systems or combinations of systems used to detect a fire, activate an alarm, extinguish or control a fire, control or manage smoke and products of a fire or any combination thereof.

International Building Code 2009 Edition
Changes related to Ambulatory Health Care Facilities
422.5 Automatic sprinkler systems



International Building Code 2009 Edition
Changes related to Ambulatory Health Care Facilities

- **IBC, SECTION 422 AMBULATORY HEALTH CARE FACILITIES**
- **422.6 Fire alarm systems.** A fire alarm system shall be provided in accordance with Section 907.2.2.1.

International Building Code 2009 Edition

Changes related to Ambulatory Health Care Facilities

- **IBC, SECTION 422 AMBULATORY HEALTH CARE FACILITIES**

- **907.2.2.1 Group B ambulatory health care facilities.** **Fire areas** containing Group B ambulatory health care facilities shall be provided with an **electronically supervised automatic smoke detection system** installed within the ambulatory health care facility and in public use areas outside of tenant spaces, including public *corridors* and elevator lobbies.

Exception: Buildings equipped throughout with an *automatic sprinkler system* in accordance with Section 903.3.1.1, provided the occupant notification appliances will activate throughout the notification zones upon sprinkler waterflow.

- **AUTOMATIC SMOKE DETECTION SYSTEM.** A fire alarm system that has initiation devices that utilize smoke detectors for protection of an area such as a room or space with detectors to provide early warning of fire.

International Building Code 2009 Edition

Changes related to Ambulatory Health Care Facilities

- **IBC, SECTION 907.2.2 Group B.** A manual fire alarm system shall be installed in Group B occupancies where one of the following conditions exists:
 - 1. The combined Group B occupant load of all floors is 500 or more.
 - 2. The Group B occupant load is more than 100 persons above or below the lowest level of exit discharge.
 - **3. The Group B fire area contains a Group B ambulatory health care facility.**

Exception: Manual fire alarm boxes are not required where the building is equipped throughout with an automatic sprinkler system installed in accordance with Section 903.3.1.1 and the occupant notification appliances will activate throughout the notification zones upon sprinkler waterflow.

International Building Code 2009 Edition
Changes related to Ambulatory Health Care Facilities
422.6 Fire alarm systems

