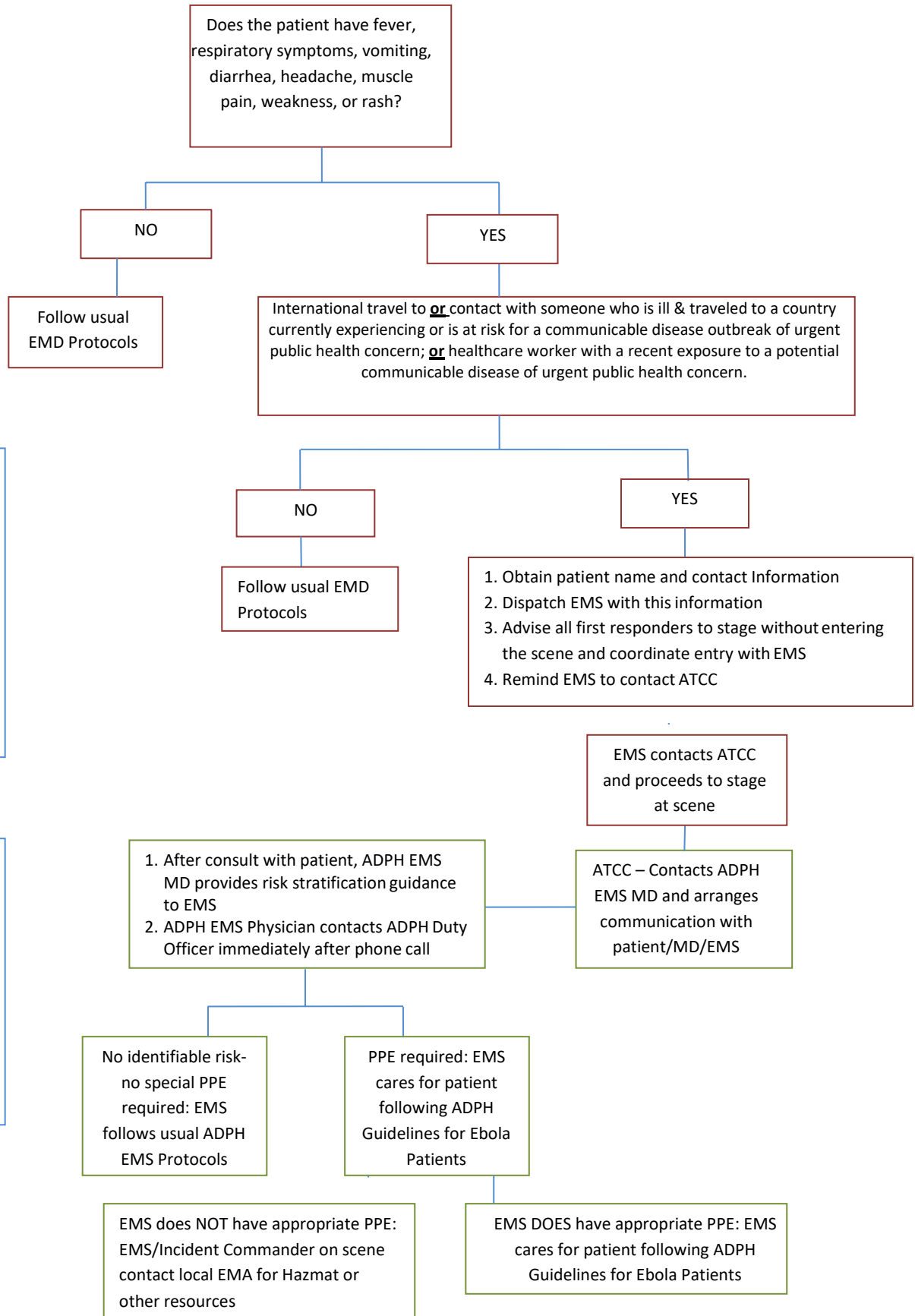


OEMS PSAP Response Protocol Guidance for Suspected Infectious Disease Patient

ADPH – Alabama Department of Public Health
AEMA – Alabama Emergency Management Agency
ATCC- Alabama Trauma Communications Center
CEP – Center for Emergency Preparedness
EMA- Emergency Management Agency
ID&O DO – Infectious Disease and Outbreaks Duty Officer
OEMS – Office of Emergency Medical Services
PSAP – Public Safety Awareness Answering Point



ADPH Duty Officer
 Once contacted, will immediately notify ID&O Duty Officer, Local EMA, AEMA Communications Room (205.280.2310, 800.843.0699), CEP Director, External Liaison, and others, as directed.

EPI Duty Officer
 Once contacted, will immediately notify ADPH (state and local) staff, as directed, contact the hospital the patient will be taken to, and ensure consultation form is initiated.